

# SMITH COUNTY ROAD BOND PROGRAM UPDATE



Ann Wilson, County Auditor  
MARCH 11, 2025

# VOTER APPROVED BOND PACKAGE – PHASE I - 2017

Phase I Voter Approved Funding – 2017 - \$39.5M	Amount Issued	Fund Name	Interest Earned	Project Expenditures	Construction Funds Remaining
2018 Series Issued	\$12M	Fund 69 Infrastructure	\$257,618.74	\$12,309,647.11	-0-
2019 Series Issued	\$12M	Fund 71 Infrastructure	\$674,497.33	\$12,673,904.67	\$592.66
2020 Series Issued	\$7.75M	Fund 72 Infrastructure	\$87,315.92	\$7,801,873.99	\$35,441.93
2021 Series Issued	\$7.75M	Fund 76 Infrastructure	\$114,648.22	\$7,749,998.75	\$114,649.47
<b>Total Authorized - \$39.5M</b>	<b>Total Issued - \$39.5M</b>		<b>\$1,134,080.21</b>	<b>\$40,535,424.52</b>	<b>\$150,684.06</b>

# VOTER APPROVED BOND PACKAGE – PHASE II - 2021

Phase I Voter Approved Funding – 2021 - \$45M	Amount Issued	Fund Name	Interest Earned	Project Expenditures	Construction Funds Remaining
2022 Series Issued	\$18M	Fund 77 Infrastructure	\$932,870.31	\$18,011,031.67	\$921,838.64
2024 Series Issued	\$7M	Fund 59 Infrastructure	\$87,871.10	\$1,083,580.39	\$6,004,290.71
<b>Total Authorized - \$45M</b>	<b>Total Issued - \$25M</b>		<b>\$1,020,741.41</b>	<b>\$19,094,612.06</b>	<b>\$6,926,129.35</b>

# COMBINED VOTER APPROVED BOND PACKAGES

Phase I & Phase II of Voter Approved Funding \$84.5M	Amount Issued	Fund Name	Interest Earned	Project Expenditures	Construction Funds Remaining
Phase I Total	\$39.5M		\$1,134,080.21	\$40,535,424.52	\$150,684.06
Phase II Total	\$25M		\$1,020,741.41	\$19,094,612.06	\$6,926,129.35
<b>Total Authorized - \$84.5M</b>	<b>Total Issued - \$64.5M</b>		<b>\$2,154,821.62</b>	<b>\$59,630,036.58</b>	<b>\$7,076,813.41</b>

# DEBT REPAYMENT SCHEDULE

Issuance	Amount Issued	P&I Remaining to Pay	Maturity Date	Purpose
Series 2018	\$12M	\$5,443,400	2/15/2028	Infrastructure
Series 2019	\$12M	\$6,881,375	2/15/2029	Infrastructure
Series 2020	\$7.75M	\$4,568,400	2/15/2030	Infrastructure
Series 2021	\$7.75M	\$6,072,350	2/15/2031	Infrastructure
<b>Phase I</b>	<b>\$39.5M</b>	<b>\$22,965,525</b>		
Series 2022	\$18M	\$19,018,906	2/15/2042	Infrastructure
Series 2024	\$7M	\$ 9,525,150	8/15/2044	Infrastructure
<b>Phase II</b>	<b>\$25M</b>	<b>\$28,544,056</b>		
<b>Total to Date</b>	<b>\$64.5M</b>	<b>\$51,509,581</b>		<b>Infrastructure Bonds Only</b>

# SMITH COUNTY ROAD BOND PROGRAM UPDATE



Frank Davis, County Engineer  
MARCH 11, 2025

## Smith County Road Capital Improvement Program

2014	<ul style="list-style-type: none"><li>• Professional Services Contract with Atkins North America, Inc. for Pavement Condition Assessment.</li></ul>
2015	<ul style="list-style-type: none"><li>• Field assessments, data entry, and pavement analysis performed by both Road &amp; Bridge Dept. and Atkins North America.</li><li>• Citizen Advisory Committee established by Commissioners Court</li><li>• Received pavement analysis report and recommendations.</li></ul>
2016	<ul style="list-style-type: none"><li>• Comprehensive Road &amp; Bridge Capital Improvement Plan developed by Road &amp; Bridge Department</li></ul>
2017	<ul style="list-style-type: none"><li>• August 15 – Commissioners Court received Road &amp; Bridge Capital Improvement Plan and proposed Bond Program.</li><li>• August 21 – Commissioners Court call for bond election.</li><li>• November 7 – Phase 1 Bond Election approved by voters.</li></ul>
2018	<ul style="list-style-type: none"><li>• First Series of Phase 1 Bonds sold</li></ul>

### PAVEMENT CATEGORIES - 2017

A	MAJOR RECONSTRUCTION & WIDENING
B	HMAC OVERLAY & RECONSTRUCTION
C	SURFACE TREATMENTS (SEAL COAT)
F	SLURRY SEAL / FOG SEAL
O	OIL DIRT / OIL SAND REBUILD
M	MISCELLANEOUS ROADWAY IMPROVEMENTS

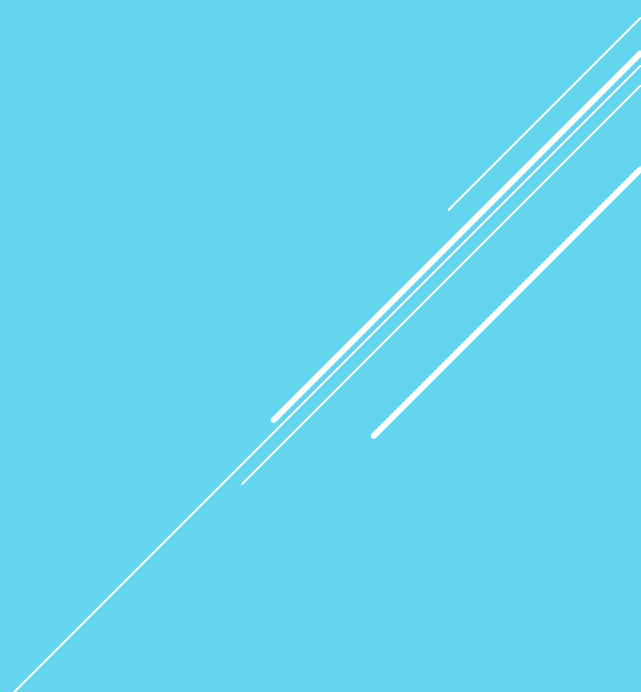
### PAVEMENT CATEGORIES - REVISED 2021

A1	MAJOR RECONSTRUCTION & WIDENING
A2	ROADWAY STABILIZATION & OVERLAY
B	HMAC OVERLAY & RECONSTRUCTION
C	SURFACE TREATMENTS (SEAL COAT)
F	SLURRY SEAL / FOG SEAL
O	OIL DIRT / OIL SAND REBUILD
M	MISCELLANEOUS ROADWAY IMPROVEMENTS



# **PHASE 1**

**November 7, 2017**



**SMITH COUNTY**  
**CAPITAL IMPROVEMENT PROGRAM - PHASE 1**

PHASE 1 PROGRAM		PROGRAMMED BOND PROJECTS		ROAD & BRIDGE ANNUAL BUDGETS		ACTUAL COMPLETED BOND PROJECTS		TOTAL ROAD & BRIDGE IMPROVEMENTS	
		MILES	COSTS	MILES	COSTS	MILES	COSTS	MILES	COSTS
A	ROADWAY RECONSTRUCTION	36.079	\$ 18,941,365			99.680	\$ 30,958,934	99.680	\$ 30,958,934
B	HMAC OVERLAY	165.239	\$ 16,889,998			104.722	\$ 5,939,943	104.722	\$ 5,939,943
M	MISCELLANEOUS ROADWAY	175.172	\$ 3,503,443	175.172	\$ 3,503,443			175.172	\$ 3,503,443
	BRIDGES (2 SITES)					0.200	\$ 1,000,791	0.200	\$ 1,000,791
	PROFESSIONAL SERVICES						\$ 1,479,337		\$ 1,479,337
	UNENCUMBERED FUNDS								\$ 150,684
<b>TOTAL PHASE 1</b>		<b>376.490</b>	<b>\$ 39,334,807</b>	<b>175.172</b>	<b>\$ 3,503,443</b>	<b>204.602</b>	<b>\$ 39,379,005</b>	<b>379.774</b>	<b>\$ 43,033,132</b>

**SMITH COUNTY  
ROAD & BRIDGE C.I.P.**

**PHASE 1**

ROAD NO.	PCT NO.	SECT ID	CAT.	FROM	TO	MILES	FY-1	FY-2	FY-3
354	3	1	M	PMO	CR 355	0.966		\$ 19,318	
354	3	2	M	CR 355	CR 353	0.152		\$ 3,030	
354	3	3	M	FM 16	PMO	1.117		\$ 22,348	
355	3	1	M	CR 353	CR 354	0.322		\$ 6,439	
357	3	1	M	CR 363	End	0.076		\$ 1,515	
357	3	2	M	CR 366	CR 362	0.279		\$ 7,576	
358	3	1	M	FM 757	CR 353	1.723		\$ 34,470	
362	3	1	M	CR 352	CR 359	0.682		\$ 13,636	
365	3	1	M	FM 16	Dirt	0.133		\$ 2,652	
368	3	1	M	CR 366	Oil Dirt	0.720		\$ 14,394	
368	3	2	M	OD	Gate	1.402		\$ 28,030	
375	4	1	M	Loop 323	City Limits	0.038	\$ 758		
378	3	1	M	Loop 323	CR 381	0.696		\$ 13,920	
378	3	2	M	CR 381	Hobbs Rd	1.446			\$ 28,917
378	3	3	M	FM 384	End	0.852			\$ 17,045
378	3	4	M	CR 384	FM 3767	0.871			\$ 17,434

**SMITH COUNTY  
ROAD & BRIDGE C.I.P.**

**CAPITAL IMPROVEMENT PROJECTS**

					PHASE 1					
ROAD NO.	PCT NO.	CAT.	FROM	TO	FY 2017-2018		FY 2018-2019		FY 2019-2020	
					MILES	COSTS	MILES	COSTS	MILES	COSTS
<b>MAJOR RECONSTRUCTION AND WIDENING</b>										
220	3	A	Hwy. 64	Hwy. 64	3.049	\$ 1,600,852				
431	4	A	Hwy. 69 N/W	I-20	2.178	\$ 1,143,466				
431	4	A	I-20 N/W	CR 41	0.777	\$ 407,670				
463	3	A	CR 475	Perryman	0.500	\$ 262,500				
1113	1	A	CR 1125	Hwy. 155	2.292	\$ 1,203,125				
41	4	A	CR 431	CR 496			1.723	\$ 904,830		
223	2	A	CR 220	FM 3226			0.701	\$ 367,898		
431	3	A	CR 41 N/W	City Limits			3.750	\$ 1,968,750		
1125	1	A	Spur 364	CR 1113			2.330	\$ 1,223,011		
41	4	A	1.715 Mi	Center of Bridge					1.004	\$ 526,989
178	1	A	FM 346	FM 2868					2.557	\$ 1,342,330
223	2	A	FM 2607	FM 3226					2.708	\$ 1,421,875
285	2	A	FM 848	CR 2215					2.315	\$ 1,215,375
313	3	A	FM 2015	FM 14					3.182	\$ 1,670,455
1113	1	A	CR 1141 (Toll 49)	CR 1125					1.635	\$ 858,375
2171	2	A	City Limit	FM 344					2.292	\$ 1,203,125
2177	2	A	Hwy. 110	Cherokee Co. Line					3.087	\$ 1,620,739
					<b>8.795</b>	<b>\$ 4,617,613</b>	<b>8.504</b>	<b>\$ 4,464,489</b>	<b>18.780</b>	<b>\$ 9,859,263</b>
<b>TOTAL: MAJOR RECONSTRUCTION AND WIDENING</b>					<b>36.079</b>			<b>18,941,365.36</b>		

**SMITH COUNTY**

**ROAD & BRIDGE PHASE 1 BOND PROGRAM - MAJOR/CONTRACTED PROJECTS**

ROAD NO.	PCT NO.	SECT ID	PRG YR	CAT	FROM	TO	ROAD MILES	BUDGET	BID NUMBER	BID AMOUNT	DATE	ACTUAL MILES	FINAL COST	CONSTR. DIFF.
<b>YEAR 1: CONTRACTED PROJECTS</b>														
220	3	1	1	A	Hwy. 64	Hwy. 64	3.049	\$ 1,600,852	RB-17-18	\$ 763,529.00	11/13/18	3.049	\$ 746,874.90	\$ (16,654.10)
223A	2	5	2	A	CR 220	FM 3226	0.701	\$ 367,898		\$ 230,262.50		0.701	\$ 233,700.10	\$ 3,437.60
431	4	2	1	A	I-20 N/W	CR 41	0.777	\$ 407,670	RB-03-19	\$ 1,158,444.70	09/03/19	0.780	\$ 1,156,308.96	\$ (2,135.74)
431	3	4	2	A	CR 41 N/W	City Limits	3.750	\$ 1,968,750				2.460		
223B	2	4	3	A	FM 2607	FM 3226	2.708	\$ 1,421,875	RB-02-19	\$ 711,009.20	03/16/19	2.708	\$ 665,826.50	\$ (45,182.70)
1113	1	2	1	A	CR 1125	Hwy. 155	2.292	\$ 1,203,125	RB-16-18	\$ 756,939.00	11/13/18	2.292	\$ 704,376.56	\$ (52,562.44)
2171	2	1	3	A	City Limit	FM 344	2.292	\$ 1,203,125	RB-01-19	\$ 790,961.36	05/28/19	2.695	\$ 729,771.68	\$ (61,189.68)
1302	2		4	B	Willingham Rd. (CR 2171)	End	0.379	\$ 37,879		\$ 80,560.00		0.379	\$ 78,455.30	\$ (2,104.70)
4108	3	1	1	B	FM 2710	CR 4109	2.595	\$ 259,470	RB-04-19	\$ 512,352.60	09/03/19	2.595	\$ 709,546.57	\$ 197,193.97
4109	3	1	1	B	FM 2710	FM 2710 North	0.511	\$ 51,136		\$ 101,500.30		0.511	\$ 90,050.24	\$ (11,450.06)
4110	3	1	1	B	CR 4108	CR 4125	1.364	\$ 136,364		\$ 268,938.47		1.364	\$ 229,934.07	\$ (39,004.40)
4125	3	1	1	B	FM 2710	CR 452	1.174	\$ 117,424		\$ 230,614.64		1.174	\$ 208,520.53	\$ (22,094.11)
4109	3	1	1	B	CEMENT TREATMENT					\$ 25,072.50				\$ (25,072.50)
485	4	1	6	B	Loop 323	CR 492	3.030	\$ 303,030	RB-11-19	\$ 450,826.19	11/12/19	3.030	\$ 545,096.01	\$ 94,269.82
486	4	1	1	M	CR 485	End	0.473	\$ 9,470		\$ 79,147.72		0.473	\$ 85,171.25	\$ 6,023.53
4159	4	1	4	M	CR 485	End	0.227	\$ 4,545		\$ 33,287.73		0.227	\$ 40,882.20	\$ 7,594.47
4160	4	1	6	B	CR 485	End	0.152	\$ 15,152		\$ 26,043.66		0.152	\$ 27,254.80	\$ 1,211.14
4203	4	1	4	M	CR 485	End	0.152	\$ 3,030		\$ 22,151.55		0.152	\$ 27,254.80	\$ 5,103.25
<b>YEAR 1: CONTRACTED PROJECTS</b>							<b>25.625</b>	<b>\$ 9,110,795</b>		<b>\$ 6,241,641.11</b>	<b>07/31/35</b>	<b>24.742</b>	<b>\$ 6,279,024.47</b>	<b>\$ 37,383.36</b>

SMITH COUNTY

ROAD & BRIDGE PHASE 1 BOND PROGRAM - MAJOR/CONTRACTED PROJECTS

ROAD NO.	PCT NO.	SECT ID	PRG YR	CAT	FROM	TO	ROAD MILES	BUDGET	BID NUMBER	BID AMOUNT	DATE	ACTUAL MILES	FINAL COST	CONSTR. DIFF.
<b>YEAR 2: CONTRACTED PROJECTS</b>														
41	4	1	2	A	CR 431	CR 496	1.723	\$ 904,830	RB-05-21	YEAR 3				
41	4	2	3	A	1.715 Mi	Center of Bridge	1.004	\$ 526,989	RB-05-21	YEAR 3				
223A	2	5	2	A	CR 220	FM 3226			RB-17-18	YEAR 1				
431	3	4	2	A	CR 41 N/W	City Limits			RB-03-19	YEAR 1				
463	3		1	A	CR 475	Perryman	0.450	\$ 262,500	RB-10-20	\$ 4,840,802.40	05/16/23	1.517	\$ 5,050,310.78	\$ 209,508.38
1125	1	5	2	A	Spur 364	CR 1113	2.330	\$ 1,223,011						MOVE TO PHASE 2
<b>PROJECT MOVED FROM PHASE 2</b>														
168	1	1/2	5	A	FM 2493	CR 178S	1.255	\$ 977,841	RB-21-19	\$ 468,459.41	03/31/20	1.255	\$ 454,348.44	\$ (14,110.98)
168	1	3/4	5	B	CR 178S	HWY 155	2.270	\$ 223,485		\$ 847,400.49		2.278	\$ 821,875.01	\$ (25,525.47)
1296	2	1	2	B	Ash Circle	End	0.038	\$ 3,788	RB-22-19	\$ 9,330.20	11/12/19	0.038	\$ 8,806.72	\$ (523.47)
1296	2	2	2	B	Pecan Dr.	End	0.095	\$ 9,470		\$ 23,325.49		0.095	\$ 22,016.81	\$ (1,308.68)
1296	2	3	2	B	Hickory Lane	End	0.455	\$ 45,455		\$ 111,962.35		0.455	\$ 105,680.69	\$ (6,281.66)
1296	2	4	2	B	Red Bud Place	End	0.246	\$ 24,621		\$ 60,646.28		0.246	\$ 57,243.71	\$ (3,402.57)
2123	2	1	1	B	City Limit	CR 2125	1.364	\$ 136,364		\$ 335,887.06		1.364	\$ 317,042.08	\$ (18,844.99)
2125	2	2	1	B	CR 2123	Dead End	0.739	\$ 73,864		\$ 181,938.83		0.739	\$ 171,731.12	\$ (10,207.70)
2332	2	1	4	B	FM 346	CR 2133	1.023	\$ 102,273		\$ 251,915.30		1.023	\$ 237,781.56	\$ (14,133.74)
427	4	1	2	B	SH 110	FM 2016	1.989	\$ 198,864	RB-27-19	\$ 705,146.00	06/16/20	1.989	\$ 689,722.30	\$ (15,423.70)
4167	4	1	4	B	SH 110	End	0.473	\$ 47,348		\$ 91,995.00		0.473	\$ 84,826.30	\$ (7,168.70)
1230	1	1	3	B	CR 132	CR 134	0.644	\$ 64,394	RB-28-19	\$ 188,937.00	06/16/20	0.652	\$ 172,390.60	\$ (16,546.40)
1273	1	1	3	B	CR 134	End	0.207	\$ 13,258		\$ 63,747.80		0.207	\$ 58,847.20	\$ (4,900.60)
1325	1	1	3	B	Whitney Lane	End	0.152	\$ 15,152		\$ 43,657.71		0.152	\$ 50,984.99	\$ 7,327.28
1325	1	2	3	B	Woodard Place	End	0.246	\$ 24,621		\$ 70,943.79		0.246	\$ 82,850.61	\$ 11,906.82

**SMITH COUNTY**

**ROAD & BRIDGE PHASE 1 BOND PROGRAM - MAJOR/CONTRACTED PROJECTS**

ROAD NO.	PCT NO.	SECT ID	PRG YR	CAT	FROM	TO	ROAD MILES	BUDGET	BID NUMBER	BID AMOUNT	DATE	ACTUAL MILES	FINAL COST	CONSTR. DIFF.
173	1	1	2	B	FM 346	CR 177	1.629	\$ 162,879	RB-23-19	\$ 412,592.22	10/13/20	1.736	\$ 378,185.93	\$ (34,406.29)
173	1	3	2	B	CR 177	CR 152	0.795	\$ 79,545		\$ 201,498.53		0.795	\$ 184,695.46	\$ (16,803.07)
174	1	1	2	M	CR 172	CR 173	0.682	\$ 13,636		\$ 172,713.02		0.682	\$ 158,310.39	\$ (14,402.63)
175	1	1	2	M	FM 346	CR 173	0.360	\$ 7,197		\$ 91,154.10		0.360	\$ 83,552.71	\$ (7,601.39)
177	1	1	2	B	FM 346	CR 181	0.473	\$ 47,348		\$ 119,939.60		0.480	\$ 109,937.77	\$ (10,001.83)
177	1	2	2	B	CR 181	CR 173	0.455	\$ 45,455		\$ 115,142.02		0.465	\$ 105,540.26	\$ (9,601.75)
177	1	3	2	B	CR 173	STA 53+67	0.564	\$ 84,659		\$ 142,968.00		0.575	\$ 131,045.82	\$ (11,922.18)
177	1	3	2	B	STA 53+67	FM 2493	0.742	\$ 111,364		\$ 484,587.00		0.755	\$ 592,441.71	\$ 107,854.71
183	1	1	2	M	CR 177	CR 1260	0.208	\$ 4,167		\$ 52,773.42		0.208	\$ 48,372.62	\$ (4,400.80)
1260	1	1	5	M	CR 183	End	0.360	\$ 7,197		\$ 91,154.10		0.370	\$ 83,552.71	\$ (7,601.39)
4191	3	1	1	B	Beechwood Cir.	End	0.057	\$ 5,682	RB-29-19	\$ 18,367.78	06/16/20	0.059	\$ 18,067.20	\$ (300.58)
4191	3	2	1	B	Redwood Cir.	End	0.076	\$ 7,576		\$ 24,490.37		0.079	\$ 24,089.60	\$ (400.77)
4191	3	3	1	B	Birchwood Circ.	End	0.114	\$ 11,364		\$ 36,735.55		0.119	\$ 36,134.39	\$ (601.16)
4191	3	4	1	B	Woodlands	End	0.890	\$ 89,015		\$ 287,761.81		0.898	\$ 283,052.75	\$ (4,709.06)
2249	3	1	2	F	Hwy 64	Gate	0.701	\$ 22,424	RB-13-20	\$ 155,826.30	09/01/20	0.701	\$ 155,764.24	\$ (62.06)
2249	3	2	2	F	CR 2249	End	0.189	\$ 6,061		\$ 42,115.22		0.189	\$ 42,098.44	\$ (16.77)
2267	3	1	4	M	Timber Creek Dr.	End	0.492	\$ 9,848		\$ 109,499.57		0.492	\$ 109,455.95	\$ (43.61)
2267	3	2	4	M	Timber Creek Circle	End	0.360	\$ 7,197		\$ 80,018.91		0.360	\$ 79,987.04	\$ (31.87)
<b>YEAR 2: CONTRACTED PROJECTS</b>							<b>25.849</b>	<b>\$ 5,600,739</b>		<b>\$ 10,935,432.60</b>		<b>22.051</b>	<b>\$ 11,010,743.91</b>	<b>\$ 75,311.31</b>

SMITH COUNTY

ROAD & BRIDGE PHASE 1 BOND PROGRAM - MAJOR/CONTRACTED PROJECTS

ROAD NO.	PCT NO.	SECT ID	PRG YR	CAT	FROM	TO	ROAD MILES	BUDGET	BID NUMBER	BID AMOUNT	DATE	ACTUAL MILES	FINAL COST	CONSTR. DIFF.	
<b>YEAR 3 CONTRACTED PROJECTS</b>															
41	4	1	2	A	CR 431	CR 496	1.723	\$ 904,830	RB-05-21		05/16/23				
41	4	2	3	A	1.715 Mi	Center of Bridge	1.004	\$ 526,989							
313	3	4	4	A	CR 41	FM 14	2.841	\$ 1,491,477							
41	4	1	2	A	CR 431	CR 313 (Ctr of Bridge)				\$ 818,737.91		2.614	\$ 814,630.50	\$ (4,107.41)	
313	3	4	4	A	CR 41 (Ctr of Bridge)	CR 32				\$ 504,295.09		1.610	\$ 501,765.17	\$ (2,529.92)	
178	1	3	3	A	FM 346	FM 2868	2.557	\$ 1,342,330	RB-16-21	\$ 787,784.90	08/23/22	2.560	\$ 766,319.56	\$ (21,465.34)	
178					RAILCAR CULVERTS									\$ 45,030.00	
223B	2	4	3	A	FM 2607	FM 3226	2.708	\$ 1,421,875	RB-02-19	YEAR 1					
285	2	2A	3	A	FM 848	CR 2215	2.315	\$ 1,215,375			MOVE TO PHASE 2				
313	3	3	3	A	FM 2015	FM 14	3.182	\$ 1,670,455			MOVE TO PHASE 2				
1113	1	1B	3	A	CR 1141 (Toll 49)	CR 1125	1.635	\$ 858,375	RB-19-20	\$ 583,043.31	10/26/21	1.635	\$ 593,773.95	\$ 10,730.64	
1125	1	1	4	A	CR 1113	Hwy. 155	1.723	\$ 904,830					1.723	\$ 566,793.38	\$ 10,243.04
1141	1	1	6	B	CR 1140	OD	0.931			\$ 199,898.00			0.931	\$ 181,499.22	\$ (18,398.78)
2171	2	1	3	A	City Limit	FM 344	2.292	\$ 1,203,125	RB-01-19	YEAR 1					
2177	2	1	3	A	Hwy. 110	Cherokee Co. Line	3.087	\$ 1,620,739	RB-20-20	\$ 985,892.00	05/18/21	3.087	\$ 909,675.48	\$ (76,216.52)	
2173	2	1	2	B	FM 756	CR 2171	1.875	\$ 187,500					1.875	\$ 64,305.30	\$ (134,494.70)
1263	1	1	5	M	Cherokee Trail	End	0.379	\$ 7,576	RB-14-20	\$ 99,832.91	09/01/20	0.379	\$ 89,379.24	\$ (10,453.67)	
1263	1	2	5	M	Virginia Rd.	End	0.549	\$ 10,985					0.559	\$ 129,599.90	\$ (15,157.82)
1263	1	3	5	M	Bay Shore Dr.	End	0.568	\$ 11,364					0.577	\$ 134,068.86	\$ (15,680.51)
411B	4	2	2	B	CR 471	I-20	1.231	\$ 123,106	RB-12-20	\$ 359,168.00	01/04/21	1.231	\$ 347,741.00	\$ (11,427.00)	



SMITH COUNTY

ROAD & BRIDGE PHASE 1 BOND PROGRAM - MAJOR/CONTRACTED PROJECTS

ROAD NO.	PCT NO.	SECT ID	PRG YR	CAT	FROM	TO	ROAD MILES	BUDGET	BID NUMBER	BID AMOUNT	DATE	ACTUAL MILES	FINAL COST	CONSTR. DIFF.
431	4	1	1		Hwy. 69 N/W	I-20	2.178	\$ 1,143,466	RB-21-20	\$ 1,340,462.00	08/15/23	2.178	\$ 1,126,485.16	\$ (213,976.84)
494	4	2	3	B	CR 431	CR 495	1.155	\$ 115,530		\$ 208,440.00		1.155	\$ 193,747.84	\$ (14,692.16)
495	4	1	3	B	CR 494	CR 492	1.231	\$ 123,106		\$ 223,328.20		1.231	\$ 225,397.68	\$ 2,069.48
496	4				Drainage Improvements		0.200			\$ 144,095.00		0.200	\$ 224,505.00	\$ 80,410.00
214					Drainage Improvements		0.000					0.100	\$ 32,950.00	\$ 32,950.00
285	2	2B	3	A	BRIDGE		0.100		RB-04-21	\$ 819,669.60	12/13/22	0.100	\$ 563,642.50	\$ (256,027.10)
1125	1	1	2	A	BRIDGE		0.100			\$ 480,332.40		0.100	\$ 437,148.50	\$ (43,183.90)
292	2	1	3	B	Tucson Oaks	End	0.189	\$ 18,939	RB-06-21	\$ 31,644.76	12/21/21	0.189	\$ 30,710.54	\$ (934.22)
292	2	2	3	B	Flagstaff Dr.	End	0.625	\$ 62,500		\$ 104,427.72		0.625	\$ 101,344.79	\$ (3,082.93)
292	2	3	3	B	Tucson Oaks at Yancy	Dead End	0.436	\$ 43,561		\$ 72,782.95		0.436	\$ 70,634.25	\$ (2,148.71)
292	2	4	3	B	Arizona	End	0.644	\$ 64,394		\$ 107,592.19		0.644	\$ 104,415.84	\$ (3,176.35)
292	2	5	3	B	Burro Dr.	End	0.625	\$ 62,500		\$ 104,427.72		0.625	\$ 101,344.79	\$ (3,082.93)
292	2	6	3	B	Phoenix Dr.	End	0.644	\$ 64,394		\$ 107,592.19		0.644	\$ 104,415.84	\$ (3,176.35)
292	2	7	3	B	Yancy Lane	End	0.814	\$ 81,439		\$ 136,072.48		0.814	\$ 132,055.33	\$ (4,017.15)
292	2	8	3	B	Nell Lynn Lane	End	0.189	\$ 18,939		\$ 31,644.76		0.189	\$ 30,710.54	\$ (934.22)
292	2	9	3	B	Martha Carol Lane	End	0.208	\$ 20,833		\$ 34,809.24		0.208	\$ 33,781.60	\$ (1,027.64)
292	2	10	3	B	Lake Pines Dr.	End	0.133	\$ 13,258		\$ 22,151.33		0.133	\$ 21,497.38	\$ (653.95)
448	3	2	4	B	FM 1805	FM 1253	2.083	\$ 208,333	RB-08-21	\$ 643,506.20	01/25/22	2.480	\$ 643,504.34	\$ (1.86)
442	3	1	2	B	FM 16	CR 482	4.981	\$ 498,106	RB-13-21	\$ 1,088,909.00	04/05/22	4.981	\$ 978,659.59	\$ (110,249.41)
484	3	1	3	M	CR 431	CR 452	0.417					0.419	\$ 82,323.50	\$ 82,323.50
366	3	2	3	B	CR 369	CR 374	3.807		RB-14-21	\$ 917,884.00	02/28/23	3.807	\$ 893,068.37	\$ (24,815.63)
369	3	1	3	B	CR 366	FM 16	2.311			\$ 561,697.50		2.311	\$ 558,145.58	\$ (3,551.92)
374	3	3	3	B	Hwy. 271	CR 3107	0.205					0.205		

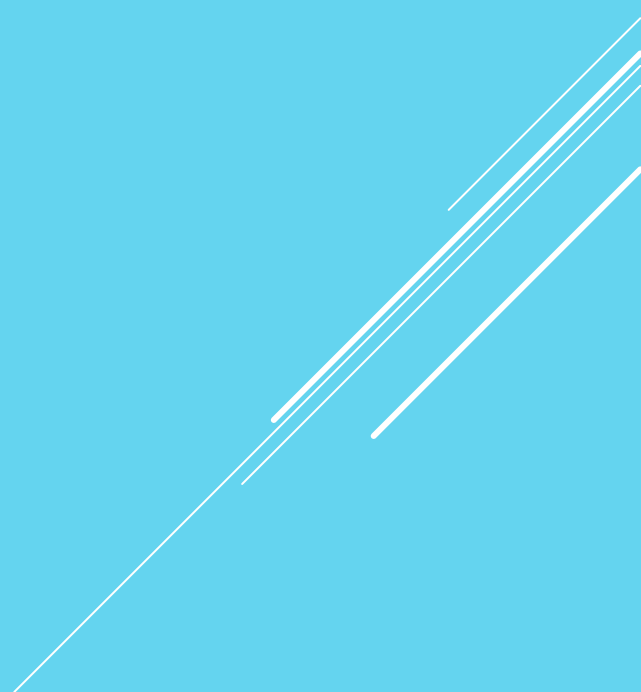
SMITH COUNTY

ROAD & BRIDGE PHASE 1 BOND PROGRAM - MAJOR/CONTRACTED PROJECTS

ROAD NO.	PCT NO.	SECT ID	PRG YR	CAT	FROM	TO	ROAD MILES	BUDGET	BID NUMBER	BID AMOUNT	DATE	ACTUAL MILES	FINAL COST	CONSTR. DIFF.
152	1	4	1	M	Hwy 69	FM 2493	1.534		RB-15-21	\$ 349,894.50	06/28/22	1.534	\$ 353,618.92	\$ 3,724.42
145	1	1	1	M	Hwy 69	City Limits	1.686			\$ 392,702.60		1.780	\$ 373,968.00	\$ (18,734.60)
1145	1	1	6	B	CR 1141 / City Limits	Toll 49	0.223	\$ 100,379	RB-11-22	\$ 255,543.00	10/11/22	0.824	\$ 234,787.93	\$ (20,755.07)
1145	1	1	6	B	Toll 49	CR 1111	0.594							
1162	1	1	3	B	Lori Lane	End	0.189	\$ 18,939	RB-09-22	\$ 357,897.50	08/23/22	1.458	\$ 349,557.40	\$ (8,340.10)
1162	1	2	3	B	Choctaw Dr.	End	0.511	\$ 51,136						
1162	1	3	3	B	Indian Dr.	End	0.758	\$ 75,758						
1188	1	1	3	B	CR 1139	End	0.170	\$ 17,045						
1241	1	1	3	B	Larry Lane	End	0.123	\$ 11,364						
1241	1	2	3	B	Ronald Circle	End	0.322	\$ 32,197						
<b>PHASE 2 PROJECTS PAID IN PHASE 1</b>														
1284	1	1	4	B	Oak Trail Dr	End	0.265	\$ 26,515	RB-10-22	\$ 93,768.59	09/13/22	0.286	\$ 86,022.33	\$ (7,746.26)
1284	1	2	4	B	Meadow Dale	End	0.246	\$ 24,621		\$ 99,997.97		0.305	\$ 91,757.15	\$ (8,240.82)
1284	1	3	4	B	Holly Ln	End	0.284	\$ 28,409		\$ 96,247.43		0.294	\$ 88,889.74	\$ (7,357.69)
1284	1	4	4	B	Leaning Oaks Dr.	End	0.284	\$ 28,409		\$ 93,142.67		0.284	\$ 86,022.33	\$ (7,120.34)
1284	1	5	4	B	Pinedale Circle	End	0.530	\$ 53,030		\$ 174,094.83		0.531	\$ 160,575.01	\$ (13,519.82)
1298	1	1	4	A2	Valley View Lane	End	0.227		RB-24-23	\$ 77,540.37	06/13/23	0.235	\$ 79,012.66	\$ 1,472.28
1298	1	2	4	A2	Ridgeline Rd.	End	0.398			\$ 131,318.38		0.398	\$ 133,811.76	\$ 2,493.38
1298	1	3	4	A2	Estates Rd.	End	0.152			\$ 53,157.68		0.161	\$ 54,167.00	\$ 1,009.32
1298	1	4	4	A2	Oak Brook Rd.	End	1.117			\$ 318,946.07		0.966	\$ 325,001.99	\$ 6,055.92
2212	3	1	4	A2	Surrey Lane	End	0.331		RB-25-23	\$ 122,260.68	05/09/23	0.331	\$ 115,353.40	\$ (6,907.28)
2212	3	2	4	A2	Surrey Trail	End	0.379			\$ 139,990.32		0.379	\$ 132,081.38	\$ (7,908.94)
<b>YEAR 3 CONTRACTED PROJECTS</b>							<b>64.199</b>	<b>\$ 16,508,033</b>		<b>\$ 15,496,799.80</b>		<b>52.936</b>	<b>\$ 14,669,957.06</b>	<b>\$ (871,872.74)</b>
<b>TOTAL: MAJOR RECONSTRUCTION AND WIDENING</b>							<b>115.673</b>	<b>\$ 31,219,567</b>		<b>\$ 32,673,873.51</b>		<b>99.729</b>	<b>\$ 31,959,725.44</b>	<b>\$ (759,178.07)</b>

# **PHASE 2**

**November 2, 2021**



## PHASE 2

### CAPITAL PROJECTS

A1	MAJOR RECONSTRUCTION & WIDENING
A2	ROADWAY STABILIZATION & OVERLAY
B	HMAC OVERLAY

### MAINTENANCE PROJECTS

C	SURFACE TREATMENTS (SEAL COAT)
F	SLURRY SEAL / FOG SEAL
O	OIL DIRT / OIL SAND REBUILD
M	MISCELLANEOUS ROADWAY IMPROVEMENTS

**SMITH COUNTY  
PHASE 2 BOND SUMMARY**

PHASE 2 PROGRAM		PROGRAMMED BOND PROJECTS		PROGRAM FUNDING	COMPLETED PHASE 2 BOND PROJECTS		PHASE 2 PROJECTS UNDER CONTRACT		PHASE 2 PROJECTS IN PLANNING OR BIDDING	
		MILES	COSTS		MILES	COSTS	MILES	COSTS	MILES	COSTS
A1	ROADWAY RECONSTRUCTION	62.364	\$ 18,650,000		57.089	\$ 20,077,460	16.629	\$ 4,877,695	21.967	
A2	STABILIZATION & HMAC OVERLAY	112.257	\$ 26,550,000							
B	HMAC OVERLAY	107.595	\$ 9,050,000		39.641	\$ 2,247,000				
	BRIDGE REPLACEMENT ( 2 SITES)		\$ 1,250,000							
	PHASE 2 APPROVED BONDS			\$ 45,000,000						
	ROAD & BRIDGE SPECIAL ROAD PROJECTS (GENERAL FUND TRANSFER INTO ROAD & BRIDGE FUND)			\$ 11,000,000						
<b>TOTAL PHASE 2</b>		<b>282.216</b>	<b>\$ 55,500,000</b>	<b>\$ 56,000,000</b>	<b>96.729</b>	<b>\$ 22,324,460</b>	<b>16.629</b>	<b>\$ 4,877,695</b>	<b>21.967</b>	<b>\$ -</b>

# SMITH COUNTY

## ROAD & BRIDGE PHASE 2 BOND PROGRAM - MAJOR/CONTRACTED PROJECTS

ROAD NO.	PCT NO.	SECT ID	PROG YR	CAT	FROM	TO	BID NUMBER	BID AMOUNT	DATE	ACTUAL MILES	FINAL COST	CONSTR. DIFF.
<b>PHASE 2: COMPLETED CONTRACTED PROJECTS</b>												
188	1	1	3	B	FM 346	FM 344	RB-19-22	\$ 732,158.10	05/23/23	1.619	\$ 719,176.20	\$ (12,981.90)
1266	1	1	3	B	Saline Dr.	John Cowan Dr.		\$ 31,905.87		0.104	\$ 32,011.80	\$ 105.93
1266	1	2	3	B	John Cowan Dr.	End		\$ 43,508.01		0.142	\$ 43,652.46	\$ 144.45
1266	1	3	3	B	Saline Dr.	End		\$ 104,419.22		0.341	\$ 104,765.89	\$ 346.67
1347	1	1	3	F	Wood Ring Rd	End		\$ -			\$ -	\$ -
1347	1	2	3	F	Gatlinburg Rd	Dead End		\$ 346,037.10		1.023	\$ 337,555.65	\$ (8,481.45)
1229	1	1	3	B	Valley View Ridge	End	RB-20-22	\$ 99,718.98	06/30/23	0.322	\$ 97,283.26	\$ (2,435.72)
1229	1	2	3	B	Gena Dr.	End		\$ 41,060.76		0.133	\$ 40,057.81	\$ (1,002.94)
1229	1	3	3	B	Joni Dr.	End		\$ 23,463.29		0.076	\$ 22,890.18	\$ (573.11)
1229	1	4	3	B	Cherokee Dr.	End		\$ 87,987.33		0.284	\$ 85,838.17	\$ (2,149.17)
1229	1	5	3	B	Cheryl Dr.	End		\$ 64,524.04		0.208	\$ 62,947.99	\$ (1,576.06)
1229	1	6	3	B	Ruth Dr.	End		\$ 23,463.29		0.076	\$ 22,890.18	\$ (573.11)
1229	1	7	3	B	Lemment Rd.	End		\$ 23,463.29		0.076	\$ 22,890.18	\$ (573.11)
1229	1	8	3	B	Mark Dr.	End		\$ 64,524.04		0.208	\$ 62,947.99	\$ (1,576.06)
1229	1	9	3	B	Maple Dr.	End		\$ 99,718.98		0.322	\$ 97,283.26	\$ (2,435.72)
1250	1	1	3	B	CR 1139	End		\$ 87,555.30		0.265	\$ 83,384.00	\$ (4,171.30)
4223	3	1	3	BB	Meadow Crest	End	RB-21-22	\$ 164,096.05	01/03/23	0.460	\$ 149,568.63	\$ (14,527.42)
3195	3	2	1	B	Creek View Circle	End		\$ 16,716.70		0.045	\$ 16,922.93	\$ 206.23
3195	3	3	1	B	Bent Trail	End		\$ 55,722.32		0.152	\$ 56,409.76	\$ 687.44
3195	3	4	1	B	Creek View Trail	End		\$ 41,791.74		0.114	\$ 42,307.32	\$ 515.58
285	2	3	4	A	FM 848	CR 2216	RB-18-22	\$ 1,364,944.13	05/09/23	5.871	\$ 1,393,288.55	\$ 28,344.43
285	2	4	4	A	CR 2216	Boat Ramp Park		\$ 562,353.17			\$ 574,031.00	\$ 11,677.82
2274	2	1	4	B	Quiet Bay Dr.	End		\$ 27,514.61		0.095	\$ 26,735.14	\$ (779.46)
2274	2	2	4	B	Janan Dr.	End		\$ 143,075.95		0.492	\$ 139,022.73	\$ (4,053.22)
2274	2	3	4	B	Jessie Hale Rd.	End		\$ 143,075.95		0.492	\$ 139,022.73	\$ (4,053.22)
2275	2	1	4	B	Shady Lane	End		\$ 39,985.69		0.133	\$ 36,308.48	\$ (3,677.21)
2275	2	2	4	B	Driftwood Dr.	End		\$ 17,136.73		0.057	\$ 15,560.78	\$ (1,575.95)
2275	2	3	4	B	Pilot Rd.	End		\$ 297,036.58		0.985	\$ 269,720.14	\$ (27,316.44)

# SMITH COUNTY

## ROAD & BRIDGE PHASE 2 BOND PROGRAM - MAJOR/CONTRACTED PROJECTS

ROAD NO.	PCT NO.	SECT ID	PROG YR	CAT	FROM	TO	BID NUMBER	BID AMOUNT	DATE	ACTUAL MILES	FINAL COST	CONSTR. DIFF.
2222	3	1	1	F	FM 850	End of Maint.	RB-12-23	\$ 458,212.97	05/16/23	1.023	\$ 415,544.68	\$ (42,668.29)
2222	3			End of Maint.	CR 2260	\$ 309,718.03		0.691		\$ 280,877.42	\$ (28,840.61)	
2260	3	1	4	M	CR 223	End		\$ 277,319.00		0.909	\$ 259,948.08	\$ (17,370.92)
452	3	7		B	CR 431	Hwy. 69	RB-13-23	\$ 733,659.05	01/30/24	2.898	\$ 733,168.54	\$ (490.51)
452	3	3		B	CR 445	CR 431		\$ 263,793.21		1.042	\$ 263,616.85	\$ (176.37)
452	3	6		A2	CR 455	CR 445		\$ 479,485.93		1.894	\$ 479,165.36	\$ (320.57)
452	3	1		A2	CR 448	CR 455		\$ 441,005.54		1.742	\$ 440,710.70	\$ (294.85)
452	3	2		A2	FM 1253	CR 448		\$ 527,333.26		2.083	\$ 526,980.70	\$ (352.56)
445	3	2		A2	CR 452	CR 484		\$ 301,631.00		1.136	\$ 323,133.50	\$ 21,502.50
448	3	3		A2	FM 1253	CR 452		\$ 460,033.00		1.856	\$ 490,357.50	\$ 30,324.50
484	3	1	3	A2	CR 431	CR 452		\$ 568,415.00		1.686	\$ 499,980.90	\$ (68,434.10)
370	3	3	2	C	BRIDGE		RB-15-23	\$ 888,260.00	05/16/23	0.200	\$ 771,420.00	\$ (116,840.00)
3111	3	4			I-20	CR 3119	RB-23-23	\$ 162,204.93	08/15/23	0.455	\$ 156,754.02	\$ (5,450.91)
3111	3	1	1	B	CR 3119	CR 3207		\$ 493,373.32		1.383	\$ 476,793.48	\$ (16,579.84)
3118	3	1	5	O	CR 3119	CR 3116		\$ 320,222.24		0.956	\$ 314,261.31	\$ (5,960.92)
3119	3	3	5	O	CR 3111	CR 3118		\$ 202,986.06		0.606	\$ 199,207.49	\$ (3,778.58)
3120	3	1			FM 2767	End		\$ 300,305.00		0.852	\$ 293,139.90	\$ (7,165.10)
1125	4	3	5	A	Spur 164	Spur 364	RB-26-23	\$ 184,686.83	10/10/23	0.475	\$ 186,777.41	\$ 2,090.58
1125	4	5	2	A	Spur 364	CR 1113		\$ 838,816.67		2.159	\$ 848,311.75	\$ 9,495.08
1140	4	1	5	A2	CR 1125	CR 1141		\$ 379,376.50		0.989	\$ 379,585.88	\$ 209.38
1141	4			A2	CR 1134	RR Bridge		\$ 152,973.08		0.492	\$ 149,672.06	\$ (3,301.02)
1141	4			A2	RR Bridge	CR 1140		\$ 197,099.92		0.634	\$ 192,846.69	\$ (4,253.23)
2191	1	1	4	B	FM 756	TRANSITON	RB-28-23	\$ 701,696.75	12/05/23	2.140	\$ 696,996.15	\$ (4,700.60)
2192	2	1	4	B	FM 2964	CR 2191		\$ 367,035.25		1.270	\$ 368,712.85	\$ 1,677.60
334	3	3	6	A	Hwy. 155	FM 2015	RB-27-23	\$ 1,130,192.50	07/23/24	2.200	\$ 1,006,268.60	\$ (123,923.90)
336	3	1	2	M	CR 337	CR 334		\$ 60,135.92		0.284	\$ 51,978.29	\$ (8,157.63)
336	3	3	2	M	I-20	CR 337		\$ 106,720.08		0.504	\$ 92,243.16	\$ (14,476.92)

# SMITH COUNTY

## ROAD & BRIDGE PHASE 2 BOND PROGRAM - MAJOR/CONTRACTED PROJECTS

ROAD NO.	PCT NO.	SECT ID	PROG YR	CAT	FROM	TO	BID NUMBER	BID AMOUNT	DATE	ACTUAL MILES	FINAL COST	CONSTR. DIFF.
1215	1	1	5	A	Hwy. 69 S	CR 137	RB-32-23	\$ 605,731.20	08/13/24	1.496	\$ 578,671.00	\$ (27,060.20)
1215	1	1	5	A	DRAINAGE IMPROVEMENTS			\$ 434,745.50		0.000	\$ 432,245.65	
148	1	2	6	B	FM 346	FM 2493		\$ 111,440.97		0.436	\$ 94,651.21	\$ (16,789.76)
137	1	3	2	B	CR 1215	FM 346		\$ 87,214.67		0.341	\$ 74,074.86	\$ (13,139.81)
1265	1	1	4	A2	CR 1215	CR 1215		\$ 53,297.86		0.208	\$ 45,267.97	\$ (8,029.88)
145				B	DRAINAGE IMPROVEMENTS			\$ 82,050.00		0.100	\$ 77,667.50	\$ (4,382.50)
152	1	3	1	A2	FM 2493	CR 173	RB-31-23	\$ 494,446.43	03/19/24	1.553	\$ 499,962.38	\$ 5,515.95
152	1	5	2	A2	CR 173	CR 181		\$ 343,700.57		1.080	\$ 347,534.82	\$ 3,834.25
155	1	1	2	M	CR 152	End		\$ 35,636.62		0.118	\$ 34,625.76	\$ (1,010.87)
156	1	1	2	M	CR 152	End		\$ 38,656.68		0.128	\$ 37,560.14	\$ (1,096.53)
173	1	2	2	B	CR 152	FM 344		\$ 260,800.50		0.890	\$ 275,373.10	\$ 14,572.60
214	3	1	4	A2	SS	OD	RB-38-23	\$ 139,455.23	04/09/24	0.398	\$ 134,496.59	\$ (4,958.64)
214	3	2	4	A2	Hot Mix	End of Maint.		\$ 126,226.90		0.360	\$ 121,738.63	\$ (4,488.28)
214	3	3	4	A2	Hwy. 64	HM		\$ 185,940.30		0.530	\$ 179,328.79	\$ (6,611.52)
2206	3	1	5	A2	Hwy. 64	CR 214		\$ 245,791.83		0.701	\$ 237,052.16	\$ (8,739.67)
2250	3	1	4	A2	CR 214	End		\$ 112,902.95		0.322	\$ 108,888.44	\$ (4,014.51)
2251	3	1	4	A2	Crestview Dr.	End		\$ 73,047.98		0.208	\$ 70,450.59	\$ (2,597.38)
2251	3	2	4	A2	Rolling Pines Dr.	End		\$ 33,309.88		0.095	\$ 32,125.47	\$ (1,184.41)
2251	3	3	4	A2	Brook Wood Dr.	End		\$ 53,295.80		0.152	\$ 51,400.75	\$ (1,895.05)
2272	3	1	6	A2	Wildwood Dr.	End		\$ 106,251.60		0.303	\$ 102,473.59	\$ (3,778.01)
2272	3	2	6	A2	Rolling Pine Dr.	End		\$ 53,125.80		0.152	\$ 51,236.80	\$ (1,889.00)
2272	3	3	6	A2	Park Wood Dr.	End		\$ 26,647.90		0.076	\$ 25,700.38	\$ (947.52)
2273	3	1	6	A2	CR 214	End	\$ 112,892.33	0.322	\$ 108,878.19	\$ (4,014.13)		
336	3	3	2	M	I-20	CR 337	RB-06-24	\$ 832,745.99	07/23/24	0.466	\$ 763,127.72	\$ (69,618.27)
<b>PHASE 2: COMPLETED CONTRACTED PROJECTS</b>								<b>\$ 20,703,003.74</b>		<b>57.089</b>	<b>\$ 20,077,458.94</b>	<b>\$ (623,044.95)</b>



# SMITH COUNTY

## ROAD & BRIDGE PHASE 2 BOND PROGRAM - MAJOR/CONTRACTED PROJECTS

ROAD NO.	PCT NO.	SECT ID	PROG YR	CAT	FROM	TO	BID NUMBER	BID AMOUNT	DATE	ACTUAL MILES	FINAL COST	CONSTR. DIFF.
<b>PHASE 2: CONTRACTED PROJECTS - NOT COMPLETED</b>												
1246	1	1	2	A2	Meadowood Dr.	End	RB-09-25	\$ 66,526.69		0.227		
1246	1	2	2	A2	Copper Oaks	End		\$ 192,927.40		0.659		
1246	1	3	2	A2	Big Timber Rd.	End		\$ 255,018.98		0.871		
1246	1	4	2	A2	Jo Bar Dr.	End		\$ 38,807.24		0.133		
1246	1	5	2	A2	Ridge Top Rd.	End		\$ 62,091.58		0.212		
1246	1	6	2	A2	Oak Meadow Circle	End		\$ 163,544.78		0.559		
1246	1	7	2	A2	Great Oaks Circle	End		\$ 138,597.27		0.473		
1246	1	8	2	A2	Hidden Lakes Dr.	End		\$ 57,656.46		0.197		
1246	1	9	2	A2	Three Lakes Rd.	End		\$ 116,421.71		0.398		
313B	3	4B	4	A	CR 35	FM 14	RB-10-25	\$ 463,116.77		1.591		
32	3	1	4	A2	FM 16	CR 313		\$ 771,817.18		2.652		
32	3	2	4	A2	FM 2710	FM 16		\$ 350,175.66		1.203		
1100	1	2	4	A2	CR 198	CR 1261	RB-12-25	\$ 374,673.12		1.269		
1100	1	4	4	A2	CR 198	CR 1131		\$ 424,865.74		1.439		
1131	1	1	4	B	CR 1133	CR 1113		\$ 439,037.77		1.487		
199	1	1	3	M	CR 1100	Timberline Dr.		\$ 167,111.89		0.566		
1225	1	1	5	M	Hill View Road	End		\$ 162,092.63		0.549		
1225	1	2	5	M	Cripple Creek	End		\$ 100,680.48		0.341		
1225	1	3	5	M	Pine Haven	End		\$ 11,219.53		0.038		
1225	1	4	5	M	Timberline Dr.	End		\$ 97,727.98		0.331		
1113	1	1B	3	A	CR 1141 (Toll 49)	CR 1125		\$ 423,584.08		1.435		
<b>PHASE 2: CONTRACTED PROJECTS - NOT COMPLETED</b>								\$ 4,877,694.90		16.629	\$ -	\$ -

# SMITH COUNTY

## ROAD & BRIDGE PHASE 2 BOND PROGRAM - MAJOR/CONTRACTED PROJECTS

ROAD NO.	PCT NO.	SECT ID	PROG YR	CAT	FROM	TO	BID NUMBER	BID AMOUNT	DATE	ACTUAL MILES	FINAL COST	CONSTR. DIFF.
<b>PHASE 2: PROJECTS IN PLANNING</b>												
3179	4	1	5	F	Hwy. 271	End	RB-08-25			0.143		
313C	3	3	3	A	FM 2015	FM 14	RB-11-25			3.191		
3147	3	1	6	A2	CR 313	OD				1.222		
3147	3	2	6	A2	CR 313	OD				1.905		
3147	3	3	6	A2	Oil Dirt	Dead End				0.919		
1139	4	3	5	A	BRIDGE		RB-14-25			0.200		
178	1	4	4	A	FM 2868	CR 168	RB-18-25			2.008		
411	4	1	2	A2	FM 849	I-20	RB-19-25			1.231		
2142	2	1	6	A	FM 345	FM 346	RB-21-25			2.975		
2152	2	2	5	A2	CR 2142	CR 2153				0.928		
2152	2	1			CR 2153	FM 345				2.087		
26	3	4	6	A2	FM 850	CR 21	RB-20-25			4.659		
27	3	1	1	M	CR 26	END				0.500		
<b>PHASE 2: PLANNED PROJECTS</b>								\$ -		21.967	\$ -	\$ -
<b>TOTAL: PHASE 2 RECONSTRUCTION AND STABILIZATION/OVERLAY</b>								\$ 25,580,698.64		95.685	\$ 20,077,458.94	\$ (623,044.95)

# **CONSTRUCTION STANDARDS AND SPECIFICATIONS**



**COUNTY OF SMITH, TEXAS**

**SPECIFICATIONS, CONTRACT DOCUMENTS AND PLANS  
FOR**

**ROAD IMPROVEMENTS**

**TO**

**CR 431**

**(JIM HOGG ROAD)**

**LINDALE CITY LIMITS TO I.H.20**



**Bid Number RB-03-19**

**JANUARY 2019**

**COUNTY OF SMITH, TEXAS**

**SPECIFICATIONS, CONTRACT DOCUMENTS AND PLANS  
FOR**

**ROADWAY IMPROVEMENTS**

**TO**

**CR 178 (FM 2868 to CR 168)**



**Bid Number RB-18-25**

**JANUARY 2025**

**GOVERNING STANDARD SPECIFICATIONS  
AND MODIFICATIONS TO STANDARD SPECIFICATIONS  
FOR THE CONSTRUCTION OF ROADWAY IMPROVEMENTS TO**

**CR 431 (JIM HOGG ROAD – LINDALE CITY LIMITS TO I.H.20)  
RB-03-19  
SMITH COUNTY, TEXAS**

All construction work for this project shall be performed in accordance with the Texas Department of Transportation Standard Specifications as outlined in the *Texas Department of Transportation 2014 Standard Specifications for Construction and Maintenance of Highways, Streets and Bridges*.

**STANDARD SPECIFICATIONS:**

TxDOT 2014 Standard Specifications specifically applicable to this project are identified as follows:

<u>ITEM NO.</u>	<u>DESCRIPTION</u>
100	Preparing Right of Way
104	Removing Concrete
110	Excavation
132	Embankment
134	Backfilling Pavement Edges
150	Blading
210	Rolling
251	Reworking Base Courses
275	Cement Treatment
300	Asphalts, Oils and Emulsions
310	Prime Coat
340	Dense-Graded Hot-Mix Asphalt
465	Reinforced Concrete Pipe
466	Headwalls and Wingwalls
502	Barricades, Signs and Traffic Handling
540	Metal Beam Guard Fence
666	Reflectorized Pavement Markings
672	Raised Pavement Markers

TxDOT 2014 Standard Specifications not listed may be applicable to this project and are included.

**GOVERNING STANDARD SPECIFICATIONS  
AND MODIFICATIONS TO STANDARD SPECIFICATIONS  
FOR THE CONSTRUCTION OF ROADWAY IMPROVEMENTS TO**

**CR 178 (FM 2868 to CR 168)  
RB-18-25  
SMITH COUNTY, TEXAS**

All construction work for this project shall be performed in accordance with the Texas Department of Transportation Standard Specifications as outlined in the *Texas Department of Transportation 2014 Standard Specifications for Construction and Maintenance of Highways, Streets and Bridges*.

**STANDARD SPECIFICATIONS:**

TxDOT 2014 Standard Specifications specifically applicable to this project are identified as follows:

<u>ITEM NO.</u>	<u>DESCRIPTION</u>
100	Preparing Right of Way
134	Backfilling Pavement Edges
150	Blading
210	Rolling
251	Reworking Base Courses
275	Cement Treatment
300	Asphalts, Oils and Emulsions
310	Prime Coat
340	Dense-Graded Hot-Mix Asphalt
432	Riprap
502	Barricades, Signs and Traffic Handling
666	Reflectorized Pavement Markings
672	Raised Pavement Markers

TxDOT 2014 Standard Specifications not listed may be applicable to this project and are included.

COUNTY OF SMITH, TEXAS  
ROAD IMPROVEMENTS  
TO  
CR 431  
(JIM HOGG ROAD – LINDALE CITY LIMITS TO I.H. 20)

PROJECT DESCRIPTION

Pavement improvements for this project shall consist of the following work items and/or categories. This description may not include all the work items that are required for this project, whether the items are paid or subsidiary to pertinent items.

CR 431 – JIM HOGG ROAD:

1. Cross-culverts shall be repaired and extended and/or replaced as shown in the plans and/or as directed by the County Engineer. Contractor will match grades and flowlines with existing culvert elevations, or as directed by the County Engineer in the field.
2. Rework the existing pavement structure within the limits as designated and/or as directed by the County Engineer. Initial rework of the existing asphalt pavement and base material shall be to a total depth of ten inches (10”) utilizing Item 251, Type D.
3. Cement treatment of the scarified area shall be to a depth of ten inches (10”). Cement is to be applied at a rate of 32 LBS/SY. The cement treated area shall be compacted by ordinary compaction methods. After treated area has cured, the surface may be primed as directed by the County Engineer or his designee.
4. HMAC overlay of the widened roadway shall include sweeping the pavement surface and the application of a tack coat immediately prior to the placement of a Type “D” HMAC surface course with a final minimum thickness of two inches (2”). Turnouts and radii of intersecting county roads shall be overlaid as part of this project and/or as directed by the County Engineer.
5. Upon completion of the HMAC overlay, the pavement edges shall be backfilled using the excess excavated material from the pavement widening. Excess material may be utilized for ditch maintenance activities and/or disposed of as directed by the County Engineer.
6. Item 132, Embankment, is designated for use for the construction of the proposed headwalls where the existing pipes have been undermined and/or the roadside ditches have been eroded. Use of clean excavated material from the roadway widening may be used for this bid item.
7. Existing mailboxes will be temporarily relocated during construction and replaced upon completion of widening and paving operations.

Access by property owners shall be maintained throughout this project. Closure of the roadway for critical work items shall be allowed but limited as much as possible. Contractor shall notify affected property owners prior to such closures.

Final cleanup of all work areas shall be made prior to final acceptance of the project.

Prospective Bidders are expected to inspect the site of work and to inform themselves regarding all local conditions.

COUNTY OF SMITH, TEXAS  
ROADWAY IMPROVEMENTS  
TO

CR 178 (FM 2868 to CR 168)

Bid Number RB-18-25

PROJECT DESCRIPTION

Pavement improvements for this project shall consist of the following work items and/or categories. This description may not include all the work items that are required for this project, whether the items are paid or subsidiary to pertinent items.

CR 178 (FM 2868 to CR 168):

1. Preparation of Right-of-way shall consist of cleaning the edges of the roadway and removal of vegetation.
2. Rework the existing pavement structure within the limits as designated and/or as directed by the County Engineer. Initial rework of the existing asphalt pavement and base material shall be to a total depth of ten inches (10”) utilizing Item 251, Type D.
3. Cement treatment of the scarified area shall be to a depth of ten inches (10”). Cement is to be applied at an estimated rate of 20 LBS/SY. The cement treated area shall be compacted by ordinary compaction methods. After treated area has cured, the surface may be primed as directed by the County Engineer or his designee.
4. HMAC overlay of the widened roadway shall include sweeping the pavement surface and the application of a tack coat immediately prior to the placement of a Type “D” HMAC surface course with a final minimum thickness of two inches (2”). Turnouts and radii of intersecting county roads shall be overlaid as part of this project and/or as directed by the County Engineer.
5. Upon completion of the HMAC overlay, the pavement edges shall be backfilled using the excess excavated material from the pavement widening. Excess material may be utilized for ditch maintenance activities and/or disposed of as directed by the County Engineer.
6. Existing mailboxes affected by the construction will be temporarily relocated during construction and replaced upon completion of widening and paving operations.
7. Nominal construction dimensions are as follows:
  - a. Cement Treatment: 26 Feet
  - b. HMAC Placement: 25 Feet

Access by property owners shall be maintained throughout this project. Closure of the roadway for critical work items shall be allowed but limited as much as possible. Contractor shall notify affected property owners prior to such closures.

Final cleanup of all work areas shall be made prior to final acceptance of the project.

Prospective Bidders are expected to inspect the site of work and to inform themselves regarding all local conditions.

**SMITH COUNTY, TEXAS  
ROADWAY IMPROVEMENTS TO  
CR 178 (FM 2868 to CR 168)  
RB-18-25**

**BID SCHEDULE**

Item No.	Estimated Quantity	Unit	Description and Price in Words	Price in Figures	Extended Amount
<b>CR 178 ROADWAY IMPROVEMENTS</b>					
100	106	STA	PREPARING ROW complete in place, the sum of _____ _____ Dollars and _____ Cents per STATION		
134	106	STA	BACKFILL PVMT EDGE (TY B) complete in place, the sum of _____ _____ Dollars and _____ Cents per STATION		
150	10	HR	BLADING FOR DITCH MAINTENANCE complete in place, the sum of _____ _____ Dollars and _____ Cents per HOUR		
251	30,930	SY	RWK BS MTL (TY D)(ORD COMP)(10 IN) complete in place, the sum of _____ _____ Dollars and _____ Cents per SQUARE YARD		
275-A	315	TON	CEMENT (3.0%)(20 LBS/SY) complete in place, the sum of _____ _____ Dollars and _____ Cents per TON		

**SMITH COUNTY, TEXAS  
ROADWAY IMPROVEMENTS TO  
CR 178 (FM 2868 to CR 168)  
RB-18-25**

**BID SCHEDULE**

Item No.	Estimated Quantity	Unit	Description and Price in Words	Price in Figures	Extended Amount
275-B	30,930	SY	CEMENT TREAT (EXIST MATL)(10 IN) complete in place, the sum of _____ _____ Dollars and _____ Cents per SQUARE YARD		
310	5,600	GAL	PRIME COAT (MC-30) complete in place, the sum of _____ _____ Dollars and _____ Cents per GALLON		
340	3,400	TON	D-GR HMA TY-C (SURF) complete in place, the sum of _____ _____ Dollars and _____ Cents per TON		
502	10	WK	BARRICADES, SIGNS AND TRAFFIC HANDLING complete in place, the sum of _____ _____ Dollars and _____ Cents per WEEK		
560	10	EA	MAILBOX - TEMP RELOCATE & RE- INSTALL complete in place, the sum of _____ _____ Dollars and _____ Cents per EACH		

Project Name:	
Date:	
Time:	
Inspector:	
Signature:	
Phase / Unit #	CR#
Location	CR#
Sub. Div. Name	
Contractor:	
Notes:	
Description of work being performed:	
Lab/Testing:	
Asphalt Type	D
HMHL Depth	2
HMHL Temp	2
REHAB	
Cement Treat	
Proof Roll	
Subgrade	
Comments:	
Weather Conditions	
Temp	
FIELD ADJUSTMENTS	

Station for  
Description of work bei

Pre-mixing

Starting

819.89-1.

like mist operation.

Project Name:	
Date: 12/4/23	
Time: 7:00 am	
Inspector: Clerk	
Signature:	
Phase / Unit #	CR#
Location	CR#
Sub. Div. Name	
Contractor: TX	
Notes:	
Description of work being performed:	
Lab/Testing:	
Asphalt Type	D
HMHL Depth	2
HMHL Temp	27
REHAB	
Cement Treat	3
Proof Roll	
Subgrade	
Comments:	
Weather Conditions	
Temp	
FIELD ADJUSTMENTS	

2 Loads Per Relocated

Start 252.603.40 +

2.5" Air

Checked for noted to Ag

284.66 + 115 tons

Project Name:	
Date:	
Time:	
Inspector:	
Signature:	
Phase / Unit #	CR#
Location	CR#
Sub. Div. Name	
Contractor: T	
Notes:	
Description of work being performed:	
Lab/Testing:	
Asphalt Type	D
HMHL Depth	
HMHL Temp	
REHAB	
Cement Treat	%
Proof Roll	
Subgrade	
Comments:	
Weather Conditions	
Temp	
FIELD ADJUSTMENTS	

Premixing

261+30 to 453.24 to

261+30 to 27 212 tons

1st load del. C

Project Name:	
Date:	
Time:	
Inspector:	
Signature:	
Phase / Unit #	CR#
Location	CR#
Sub. Div. Name	
Contractor: TP	
Notes:	
Description of work being performed:	
Lab/Testing:	
Asphalt Type	
HMHL Depth	
HMHL Temp	
REHAB	
Cement Treat	%
Proof Roll	
Subgrade	
Comments:	
Weather Conditions	
Temp	
FIELD ADJUSTMENTS	

Cement +

Cement on 2 Loads

Project Name:	
Date:	
Time:	
Inspector:	
Signature:	
Phase / Unit #	CR#
Location	CR#
Sub. Div. Name	
Contractor: TP	
Notes:	
Description of work being performed:	
Lab/Testing:	
Asphalt Type	
HMHL Depth	
HMHL Temp	
REHAB	
Cement Treat	3 %
Proof Roll	
Subgrade	
Comments:	
Weather Conditions	
Temp	
FIELD ADJUSTMENTS	

No. Site visit

CR 484 start 69

CR 445 start 0+0

Project Name:	
Date: 12/4/23	
Time: 7:00 am	
Inspector: Clerk	
Signature:	
Phase / Unit #	CR#
Location	CR# 484/445
Sub. Div. Name	
Contractor:	
Notes:	
Description of work being performed:	
Lab/Testing:	
Asphalt Type	D 64-22
HMHL Depth	2"
HMHL Temp	255-260
REHAB	
Cement Treat	%
Proof Roll	
Subgrade	
Comments:	
Weather Conditions	
Temp	
FIELD ADJUSTMENTS	

Pre-mixing - CR 445

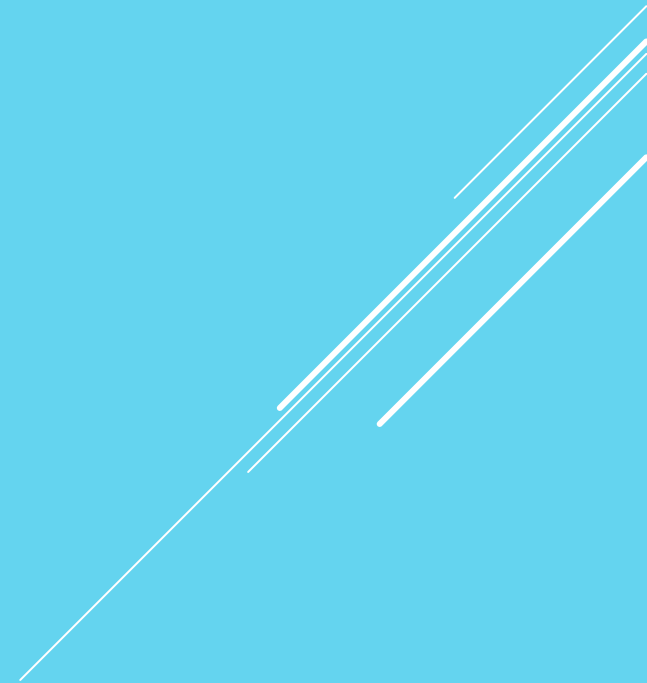
Paving 484 from CR 452 to Ret # 735.92 tons

Clean

38.640



# **GENERAL INFORMATION**



# SMITH COUNTY

FY	PROJECT NO.	CEMENT						HMAC					
		BID 1	BID 2	BID 3	BID 4	AVE. PROJECT	AVERAGE FOR FY	BID 1	BID 2	BID 3	BID 4	AVE. PROJECT	AVE. FY
2018	RB-06-18	\$ 180.00	\$ 160.00	\$ 144.00	\$ 170.00	\$ 163.50	\$ 164.75	\$ 102.00	\$ 102.00	\$ 97.00	\$ 105.00	\$ 101.50	\$ 104.00
	RB-17-18							\$ 100.00	\$ 100.00	\$ 107.00	\$ 110.00	\$ 104.25	
		\$ 190.00	\$ 160.00	\$ 170.00	\$ 144.00	\$ 166.00		\$ 102.00	\$ 100.00	\$ 105.00	\$ 118.00	\$ 106.25	
2019	RB-01-19	\$ 140.00	\$ 155.00	\$ 190.00	\$ 156.00	\$ 160.25	\$ 158.25	\$ 92.00	\$ 97.00	\$ 105.00	\$ 99.00	\$ 98.25	\$ 100.13
	RB-02-19	\$ 140.00	\$ 145.00	\$ 190.00	\$ 160.00	\$ 158.75		\$ 95.00	\$ 97.00	\$ 105.00	\$ 98.00	\$ 98.75	
	RB-03-19	\$ 165.00	\$ 150.00	\$ 140.00	\$ 145.00	\$ 150.00		\$ 105.00	\$ 100.00	\$ 99.00	\$ 93.00	\$ 99.25	
	RB-21-19	\$ 143.00	\$ 195.00	\$ 158.00	\$ 160.00	\$ 164.00		\$ 100.00	\$ 115.00	\$ 97.00	\$ 105.00	\$ 104.25	
2020	RB-12-20	\$ 200.00	\$ 200.00	\$ 164.00	\$ 150.00	\$ 178.50	\$ 169.94	\$ 100.00	\$ 116.00	\$ 105.00	\$ 103.00	\$ 106.00	\$ 104.63
	RB-13-20	\$ 170.00	\$ 150.00	\$ 165.00	\$ 165.00	\$ 162.50		\$ 100.00	\$ 102.00	\$ 100.00	\$ 103.00	\$ 101.25	
	RB-14-20	\$ 180.00	\$ 150.00	\$ 165.00	\$ 175.00	\$ 167.50		\$ 100.00	\$ 105.00	\$ 106.00	\$ 110.00	\$ 105.25	
	RB-20-20	\$ 145.00	\$ 170.00	\$ 170.00	\$ 200.00	\$ 171.25		\$ 102.00	\$ 105.00	\$ 105.00	\$ 112.00	\$ 106.00	
2021	RB-05-21	\$ 153.00	\$ 174.00	\$ 175.00		\$ 167.33	\$ 170.71	\$ 106.00	\$ 102.00	\$ 125.00		\$ 111.00	\$ 108.77
	RB-08-21	\$ 177.00	\$ 154.00	\$ 200.00	\$ 180.00	\$ 177.75		\$ 103.00	\$ 112.00	\$ 112.00	\$ 108.00	\$ 108.75	
	RB-13-21	\$ 170.00	\$ 148.00	\$ 174.00		\$ 164.00		\$ 102.00	\$ 105.00	\$ 103.00		\$ 103.33	
	RB-16-21	\$ 153.00	\$ 177.00	\$ 200.00	\$ 165.00	\$ 173.75		\$ 103.00	\$ 105.00	\$ 120.00	\$ 120.00	\$ 112.00	

# SMITH COUNTY

FY	PROJECT NO.	CEMENT						HMAC					
		BID 1	BID 2	BID 3	BID 4	AVE. PROJECT	AVERAGE FOR FY	BID 1	BID 2	BID 3	BID 4	AVE. PROJECT	AVE. FY
2022	RB-10-22	\$ 221.00	\$ 193.00	\$ 255.00		\$ 223.00	\$ 230.47	\$ 118.00	\$ 125.00	\$ 136.70		\$ 126.57	\$ 126.68
	RB-11-22	\$ 193.00	\$ 200.00	\$ 217.00		\$ 203.33		\$ 124.00	\$ 136.00	\$ 118.00		\$ 126.00	
	RB-18-22	\$ 230.00	\$ 237.00			\$ 233.50		\$ 125.00	\$ 118.00			\$ 121.50	
	RB-19-22	\$ 235.00	\$ 240.00	\$ 305.00		\$ 260.00		\$ 120.00	\$ 125.00	\$ 180.50		\$ 141.83	
	RB-20-22	\$ 230.00	\$ 235.00			\$ 232.50		\$ 120.00	\$ 115.00			\$ 117.50	
2023	RB-12-23	\$ 250.00	\$ 274.00			\$ 262.00	\$ 265.58	\$ 135.00	\$ 134.00			\$ 134.50	\$ 142.38
	RB-13-23	\$ 220.00	\$ 270.00			\$ 245.00		\$ 130.50	\$ 134.00			\$ 132.25	
	RB-23-23	\$ 290.00	\$ 265.00			\$ 277.50		\$ 140.00	\$ 160.00			\$ 150.00	
	RB-24-23	\$ 270.00	\$ 260.00			\$ 265.00		\$ 135.00	\$ 150.00			\$ 142.50	
	RB-28-23	\$ 255.00	\$ 280.00			\$ 267.50		\$ 145.00	\$ 140.00			\$ 142.50	
	RB-38-23	\$ 248.00	\$ 305.00			\$ 276.50		\$ 152.00	\$ 153.00			\$ 152.50	
2024	RB-06-24	\$ 275.00	\$ 293.00			\$ 284.00	\$ 292.00	\$ 140.00	\$ 148.00			\$ 144.00	\$ 144.88
	RB-13-24	\$ 305.00	\$ 295.00			\$ 300.00		\$ 146.50	\$ 145.00			\$ 145.75	
2025	RB-07-25	\$ 250.00	\$ 275.00	\$ 285.00	\$ 270.00	\$ 270.00	\$ 260.81	\$ 135.00	\$ 139.00	\$ 150.25	\$ 165.00	\$ 147.31	\$ 143.55
	RB-09-26	\$ 250.00	\$ 284.00	\$ 275.00	\$ 270.00	\$ 269.75		\$ 134.00	\$ 144.50	\$ 150.00	\$ 165.00	\$ 148.38	
	RB-11-25	\$ 235.00	\$ 275.00	\$ 243.00		\$ 251.00		\$ 122.00	\$ 140.25	\$ 143.00		\$ 135.08	
	RB-12-25	\$ 235.00	\$ 275.00	\$ 230.00	\$ 270.00	\$ 252.50		\$ 125.00	\$ 141.70	\$ 142.00	\$ 165.00	\$ 143.43	

**2025 vs 2019**      **164.81%**

**2025 vs 2019**      **143.37%**

# SMITH COUNTY

COMMENTS	PROJECT NO.	DESCRIPTION	MILES	ORIGINAL CONTRACT	FINAL CONTRACT	ACCEPTED DATE	UNDERRUN	OVERRUN	ACCOUNT BALANCE
----------	-------------	-------------	-------	-------------------	----------------	---------------	----------	---------	-----------------

## ROAD & BRIDGE BOND PROGRAM

	RB-16-18	CR 1113	2.292	\$ 756,939.00	\$ 704,376.56	13-Nov-2018	\$ 52,562.44		\$ 52,562.44
	RB-17-18	CR 220 & CR 223A	3.750	\$ 993,791.50	\$ 980,575.00	13-Nov-2018	\$ 13,216.50		\$ 65,778.94
	RB-01-19	CR 2171 & CR 1302	3.074	\$ 871,521.36	\$ 808,226.98	28-May-2019	\$ 63,294.38		\$ 129,073.32
	RB-02-19	CR 223B	2.708	\$ 711,009.20	\$ 665,826.50	26-Mar-2019	\$ 45,182.70		\$ 174,256.02
	RB-03-19	CR 431	3.241	\$ 1,158,444.70	\$ 1,156,308.96	3-Sep-2019	\$ 2,135.74		\$ 176,391.76
	RB-04-19	CR 4108, CR 4109, CR 4110 & CR 4125	5.644	\$ 1,138,478.50	\$ 1,238,051.40	3-Sep-2019		\$ 99,572.90	\$ 76,818.86
	RB-11-19	CR 485, CR 486, CR 4160 & CR 4203	4.034	\$ 611,456.85	\$ 725,659.06	12-Nov-2019		\$ 114,202.21	\$ (37,383.35)
	RB-21-19	CR 168	3.533	\$ 1,315,859.90	\$ 1,276,223.45	31-Mar-2020	\$ 39,636.45		\$ 2,253.10
	RB-22-19	CR 1296, CR 2123, CR 2125 & CR 2332	3.958	\$ 975,005.51	\$ 920,302.69	12-Nov-2019	\$ 54,702.82		\$ 56,955.92
	RB-23-19	CR 173, CR 177, CR 183 & CR 1260	6.426	\$ 1,884,522.00	\$ 1,875,635.38	13-Oct-2020	\$ 8,886.62		\$ 65,842.54
	RB-27-19	CR 427 & CR 4167	2.462	\$ 797,141.00	\$ 774,548.60	16-Jun-2020	\$ 22,592.40		\$ 88,434.94
	RB-28-19	CR 1230, CR 1273 & CR 1325	1.257	\$ 367,286.30	\$ 365,073.40	16-Jun-2020	\$ 2,212.90		\$ 90,647.84
	RB-29-19	CR 4191	1.155	\$ 367,355.50	\$ 361,343.93	16-Jun-2020	\$ 6,011.57		\$ 96,659.41
CO#1, #2 & #3	RB-10-20	CR 463 (Woodsprings)	1.517	\$ 5,046,448.37	\$ 5,050,310.78	16-May-2023		\$ 3,862.41	\$ 92,797.00
	RB-12-20	CR 411	1.231	\$ 359,168.00	\$ 347,741.00	4-Jan-2021	\$ 11,427.00		\$ 104,224.00
	RB-13-20	CR 2249 & CR 2267	1.742	\$ 387,460.00	\$ 387,305.68	1-Sep-2020	\$ 154.32		\$ 104,378.32
	RB-14-20	CR 1263	1.515	\$ 394,340.00	\$ 353,048.00	1-Sep-2020	\$ 41,292.00		\$ 145,670.32
	RB-19-20	CR 1113 & CR 1125	4.289	\$ 1,339,491.65	\$ 1,342,066.55	26-Oct-2021		\$ 2,574.90	\$ 143,095.42
CO#1 added	RB-20-20	CR 2177, CR 2173	4.962	\$ 1,041,363.00	\$ 973,980.78	18-May-2021	\$ 67,382.22		\$ 210,477.64
	RB-21-20	CR 431, CR 494 & CR 495	4.864	\$ 1,916,325.20	\$ 1,803,085.58	15-Aug-2023	\$ 113,239.62		\$ 323,717.26
	RB-04-21	BRIDGES - CR 285 & CR 1125	0.200	\$ 1,300,002.00	\$ 1,000,791.00	13-Dec-2022	\$ 299,211.00		\$ 622,928.26
	RB-05-21	CR 41 & CR 313(A)	4.223	\$ 1,323,033.00	\$ 1,316,395.67	16-May-2023	\$ 6,637.33		\$ 629,565.59
	RB-06-21	CR 292	4.508	\$ 753,145.35	\$ 730,910.91	21-Dec-2021	\$ 22,234.44		\$ 651,800.03
	RB-08-21	CR 448	2.480	\$ 643,506.20	\$ 643,504.34	25-Jan-2022	\$ 1.86		\$ 651,801.89
	RB-13-21	CR 422	5.400	\$ 1,088,909.00	\$ 1,060,983.09	5-Apr-2022	\$ 27,925.91		\$ 679,727.80
	RB-14-21	CR 366 & CR 369	6.322	\$ 1,479,581.50	\$ 1,451,213.95	28-Feb-2023	\$ 28,367.55		\$ 708,095.35
	RB-15-21	CR 145 & CR 152	3.314	\$ 742,597.10	\$ 727,586.92	28-Jun-2022	\$ 15,010.18		\$ 723,105.53
	RB-16-21	CR 178	2.560	\$ 787,784.90	\$ 766,319.56	23-Aug-2022	\$ 21,465.34		\$ 744,570.87
	RB-16-21	CR 178 - Drainage Pipes	0.000	\$ 45,030.00	\$ 45,030.00	23-Aug-2022			\$ 744,570.87
	RB-09-22	CR 1162, CR 1188 & CR 1241	2.074	\$ 528,215.90	\$ 519,816.94	23-Aug-2022	\$ 8,398.96		\$ 752,969.83
	RB-10-22	CR 1284	1.700	\$ 557,251.50	\$ 513,266.56	13-Sep-2022	\$ 43,984.94		\$ 796,954.77
	RB-11-22	CR 1145	0.824	\$ 255,543.00	\$ 234,787.93	11-Oct-2022	\$ 20,755.07		\$ 817,709.84
	RB-18-22	CR 285, CR 2274 & CR 2275	8.125	\$ 2,595,122.80	\$ 2,593,689.55	9-May-2023	\$ 1,433.25		\$ 819,143.09
	RB-19-22	CR 188, CR 1266 & CR 1347	3.229	\$ 1,258,028.30	\$ 1,237,162.00	23-May-2023	\$ 20,866.30		\$ 840,009.39
	RB-20-22	CR 1229 & CR 1250	1.970	\$ 615,479.30	\$ 598,413.00	20-Jun-2023	\$ 17,066.30		\$ 857,075.69
	RB-21-22	CR 3195 & CR 4223	0.771	\$ 278,326.80	\$ 265,208.38	3-Jan-2023	\$ 13,118.42		\$ 870,194.11

### SMITH COUNTY

COMMENTS	PROJECT NO.	DESCRIPTION	MILES	ORIGINAL CONTRACT	FINAL CONTRACT	ACCEPTED DATE	UNDERRUN	OVERRUN	ACCOUNT BALANCE
	RB-23-23	CR 3111, CR 3118, CR 3119 & CR 3120	4.251	\$ 1,479,091.55	\$ 1,440,156.20	15-Aug-2023	\$ 38,935.35		\$ 909,129.46
	RB-12-23	CR 2222 & CR 2260	2.623	\$ 1,045,250.00	\$ 956,370.18	16-May-2023	\$ 88,879.82		\$ 998,009.28
	RB-13-23	CR 452, CR 445, CR 448 & CR 484	14.337	\$ 3,775,356.01	\$ 3,757,114.05	30-Jan-2024	\$ 18,241.96		\$ 1,016,251.24
	RB-15-23	CR 370 BRIDGE	0.200	\$ 888,260.00	\$ 771,420.00	5-Dec-2023	\$ 116,840.00		\$ 1,133,091.24
	RB-24-23	CR 1298	1.760	\$ 580,962.50	\$ 591,993.40	13-Jun-2023		\$ 11,030.90	\$ 1,122,060.34
	RB-25-23	CR 2212	0.710	\$ 262,251.00	\$ 247,434.78	9-May-2023	\$ 14,816.22		\$ 1,136,876.56
	RB-26-23	CR 1125, CR 1140 & CR 1141	4.750	\$ 1,752,953.00	\$ 1,757,193.79	10-Oct-2023		\$ 4,240.79	\$ 1,132,635.77
	RB-27-23	CR 334 & CR 336	2.988	\$ 1,297,048.50	\$ 1,150,490.05	23-Jul-2024	\$ 146,558.45		\$ 1,279,194.22
	RB-28-23	CR 2191 & CR 2192	3.410	\$ 1,068,732.00	\$ 1,065,709.00	5-Dec-2023	\$ 3,023.00		\$ 1,282,217.22
	RB-31-23	CR 152, CR 173, CR 155 & CR 156	3.769	\$ 1,173,240.80	\$ 1,195,056.20	19-Mar-2024		\$ 21,815.40	\$ 1,260,401.82
	RB-32-23	CR 1215, CR 137, CR 1265, CR 148 & CR 145	2.581	\$ 1,374,480.20	\$ 1,302,578.20	13-Aug-2024	\$ 71,902.00		\$ 1,332,303.82
	RB-38-23	CR 214, CR 2206, CR 2251, CR 2272, CR 2273	3.619	\$ 1,268,888.58	\$ 1,223,770.38	9-Apr-2024	\$ 45,118.20		\$ 1,377,422.02
	RB-06-24	CR 336	0.466	\$ 832,745.99	\$ 763,127.72	23-Jul-2024	\$ 69,618.27		\$ 1,447,040.29
	RB-09-25	CR 1246	3.729	\$ 1,091,592.10					\$ 1,447,040.29
	RB-10-25	CR 313B & CR 32	5.446	\$ 1,585,109.60					\$ 1,447,040.29
	RB-12-25	CR 1100, CR 1113, CR 1131, CR 1225 & CR 199	7.455	\$ 2,200,993.20					\$ 1,447,040.29
									\$ 1,447,040.29
									\$ 1,447,040.29
									\$ 1,447,040.29
									\$ 1,447,040.29
									\$ 1,447,040.29
<b>BOND PROGRAM BALANCES</b>			<b>173.448</b>	<b>\$ 58,361,919.22</b>	<b>\$ 52,037,184.03</b>		<b>\$ 1,704,339.80</b>	<b>\$ 257,299.51</b>	<b>\$ 1,447,040.29</b>

## SMITH COUNTY

COMMENTS	PROJECT NO.	DESCRIPTION	MILES	ORIGINAL CONTRACT	FINAL CONTRACT	ACCEPTED DATE	UNDERRUN	OVERRUN	ACCOUNT BALANCE
----------	-------------	-------------	-------	-------------------	----------------	---------------	----------	---------	-----------------

### R&B ANNUAL BUDGETS

FY15 BUDGET	RB-11-15	CR 46 & CR 4227	4.607	\$ 1,491,474.30	\$ 1,594,700.93	19-Sep-2017		\$ 103,226.63	\$ (103,226.63)
FY15 BUDGET	RB-12-15	CR 21	3.223	\$ 1,338,498.00	\$ 1,330,227.54	17-May-2016	\$ 8,270.46		\$ (94,956.17)
FY16 BUDGET	RB-06-16	CR 133, CR 140 CR 1232 & CR 1307	4.183	\$ 1,018,475.00	\$ 996,721.00	27-Sep-2016	\$ 21,754.00		\$ (73,202.17)
FY16 BUDGET	RB-07-16	CR 3160	1.375	\$ 379,824.97	\$ 357,242.85	27-Sep-2016	\$ 22,582.12		\$ (50,620.05)
FY16 BUDGET	RB-08-16	CR 4213	2.178	\$ 406,675.00	\$ 381,392.80	27-Sep-2024	\$ 25,282.20		\$ (25,337.85)
FY16 BUDGET	RB-12-16	CR 4212	0.950	\$ 272,127.50	\$ 250,063.00	31-Jan-2017	\$ 22,064.50		\$ (3,273.35)
FY16 BUDGET	RB-13-16	CR 2221	1.900	\$ 301,205.00	\$ 310,451.69	2-Apr-2017		\$ 9,246.69	\$ (12,520.04)
FY16 BUDGET	RB-14-16	CR 419 & CR 431 (Drainage Improvements)	0.200	\$ 376,715.00	\$ 344,049.00	2-Apr-2017	\$ 32,666.00		\$ 20,145.96
FY17 BUDGET	RB-09-17	CR 149	1.534	\$ 326,930.00	\$ 299,505.60	19-Sep-2017	\$ 27,424.40		\$ 47,570.36
FY17 BUDGET	RB-10-17	CR 2328, CR 2323 & CR 2294	1.858	\$ 423,640.00	\$ 423,716.16	19-Dec-2017		\$ 76.16	\$ 47,494.20
FY17 BUDGET	RB-20-17	CR 1261 & CR 1253	3.071	\$ 1,274,544.00	\$ 1,129,340.50	19-Dec-2024	\$ 145,203.50		\$ 192,697.70
FY18 BUDGET	RB-08-18	CR 2191	0.341	\$ 698,968.45	\$ 697,016.36	19-Feb-2019	\$ 1,952.09		\$ 194,649.79
FY18 BUDGET	RB-18-18	FY18 Micro Surfacing	42.707	\$ 731,155.00	\$ 719,892.77	30-Sep-2019	\$ 11,262.23		\$ 205,912.02
FY20 BUDGET	RB-15-20	FY20 Asphalt Pvmnt Preservation	21.112	\$ 587,350.80	\$ 591,049.31	1-Sep-2020		\$ 3,698.51	\$ 202,213.51
FY23 BUDGET	RB-29-23	CR 457 & CR 251	4.148	\$ 689,647.00	\$ 691,415.46	13-Aug-2024		\$ 1,768.46	\$ 200,445.05
FY23 BUDGET	RB-34-23	R&B Pavilion		\$ 173,000.00	\$ 173,000.00	9-Nov-2023			\$ 200,445.05
FY24 BUDGET	RB-10-24	CR 118	2.926	\$ 762,450.00	\$ 766,383.00	19-Nov-2024		\$ 3,933.00	\$ 196,512.05
FY24 BUDGET	RB-13-24	CR 2203 & CR 2337	1.519	\$ 504,079.00	\$ 523,369.55	17-Dec-2024		\$ 19,290.55	\$ 177,221.50
		<b>FY BUDGET BALANCES</b>	<b>97.833</b>	<b>\$ 11,756,759.02</b>	<b>\$ 11,579,537.52</b>		<b>\$ 318,461.50</b>	<b>\$ 141,240.00</b>	<b>\$ 177,221.50</b>

<b>TOTAL BALANCES</b>	<b>271.281</b>	<b>\$ 70,118,678.24</b>	<b>\$ 63,616,721.55</b>		<b>\$ 2,022,801.30</b>	<b>\$ 398,539.51</b>	<b>\$ 1,624,261.79</b>
-----------------------	----------------	-------------------------	-------------------------	--	------------------------	----------------------	------------------------

### ARPA

ARPA	RB-33-23	PARKING LOT ON 218 E. LINE STR.		\$ 191,193.50	\$ 181,122.50	19-Mar-2024	\$ 10,071.00		\$ 10,071.00
ARPA		BRANNON CORP. - ENGINEERING CONTRACT		\$ 400,000.00					\$ 10,071.00
ARPA	RB-39-23	CR 3344 CLEARING		\$ 359,494.00	\$ 238,895.00	19-Mar-2024	\$ 120,599.00		\$ 130,670.00
ARPA	RB-41-23	CR 3344 PAVING & DRAINAGE	1.580	\$ 4,800,270.60					\$ 130,670.00
ARPA	RB-40-23	R&B FUEL FACILITY		\$ 683,580.00					\$ 130,670.00
ARPA	RB-40-23	CO#1		\$ 59,756.72					\$ 130,670.00
ARPA	RB-40-23	CO#2		\$ 27,870.85					\$ 130,670.00
		<b>ARPA BALANCES</b>	<b>1.580</b>	<b>\$ 6,522,165.67</b>	<b>\$ 420,017.50</b>		<b>\$ 130,670.00</b>	<b>\$ -</b>	



**CR 285 (Old Omen Rd)**  
**5.871 Miles (FM 848 to END)**  
**\$1,967,319.55**





10.11.20

# CR 285 BRIDGE

**\$563,642.50**







**CR 1125 (Greenbriar Rd)**  
**1.723 Miles (SH 155 - CR 1113)**  
**\$549,960.81**





**CR 2249**  
**0.852 Miles (US HWY 64 to END)**  
**\$189,755.28**





**CR 1273**  
**0.208 Miles (CR 134 to END)**  
**\$58,847.20**





# Road & Bridge Department

- **Provide semi-annual updates on Road Bond Program.**
- **Provide quarterly updates on departmental activities.**
- **Committed to the completion of the Smith County Road Bond Program.**
- **Continue to monitor construction inflation factors.**
- **Continue oversight of the courthouse construction.**