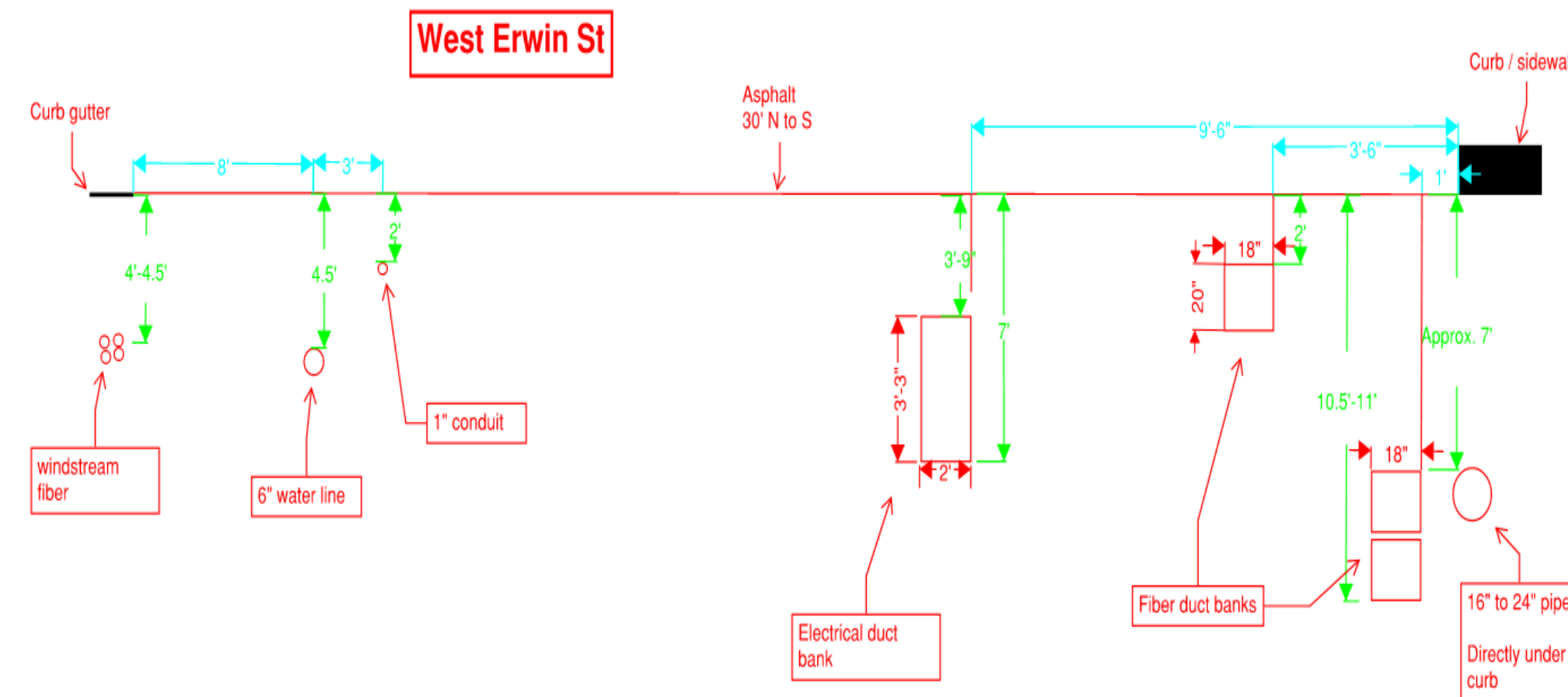


Smith County Commissioners Court - Courthouse Construction Update

Big Picture Update



- Concrete completion planned for 9/5
- $\approx 18,000$ CY concrete placed;
1,700 TNS rebar installed
 - 1,800 concrete trucks
 - 680 pickup trucks
- Average 220+ workers everyday
- Buildout of levels 1-4
 - Interior / exterior walls & MEPS systems
- Electrical distribution from main electrical room
- Tunnel structure done & backfilled!



Aerial Photos from 6-3-25 & 8-15-25:



Aerial Photos from 6-3-25 & 8-15-25:



Aerial Flight from 8-15-25



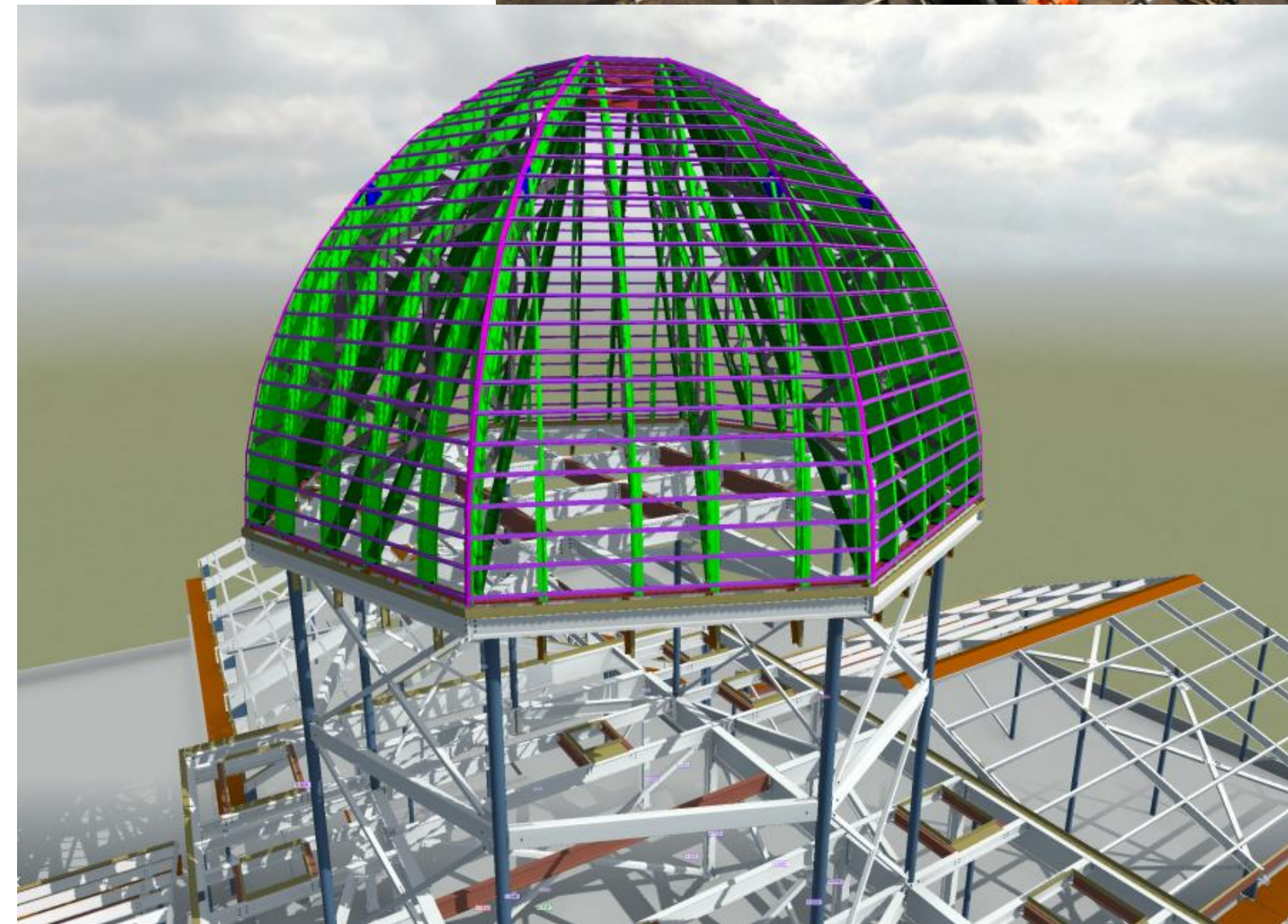
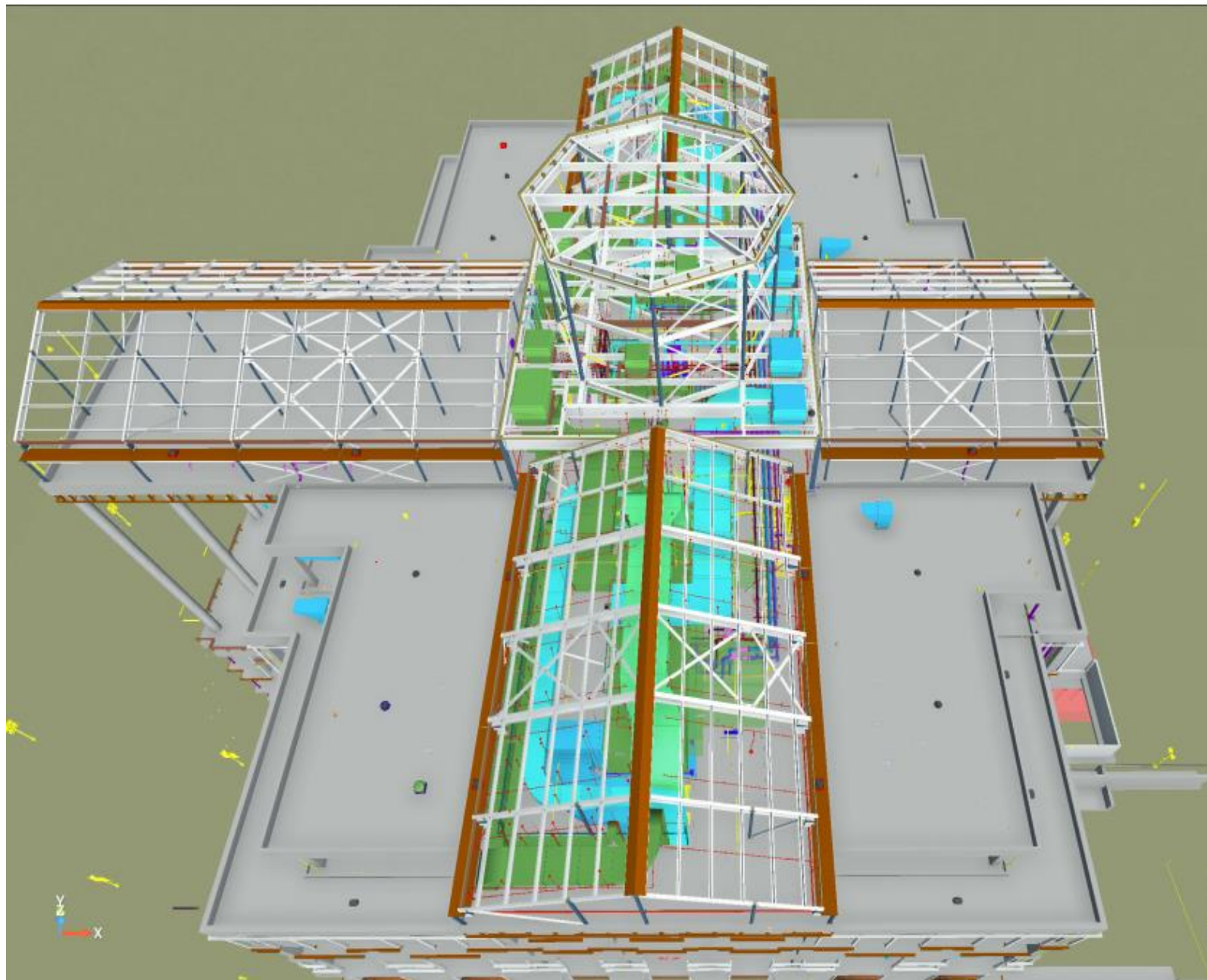
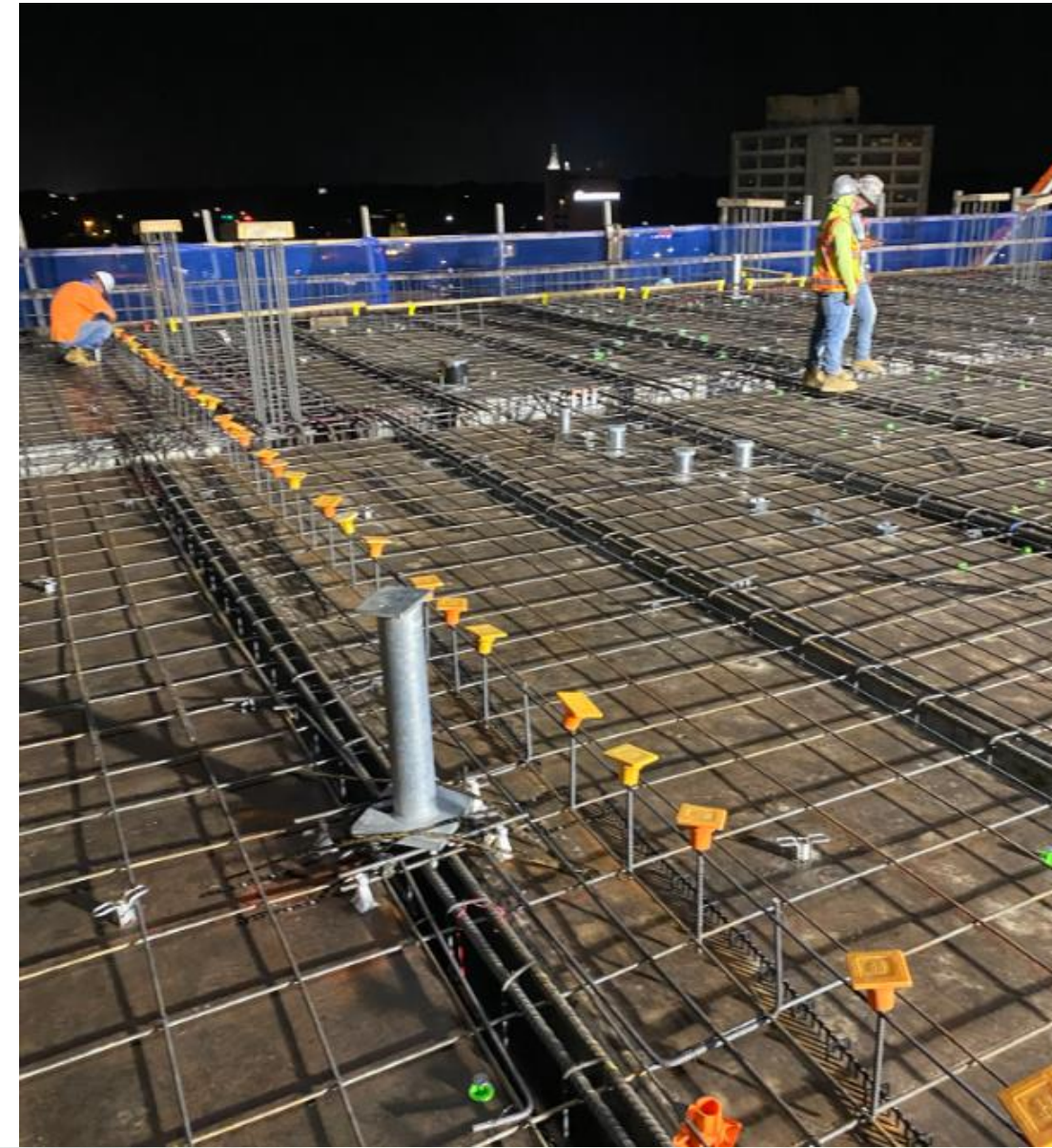
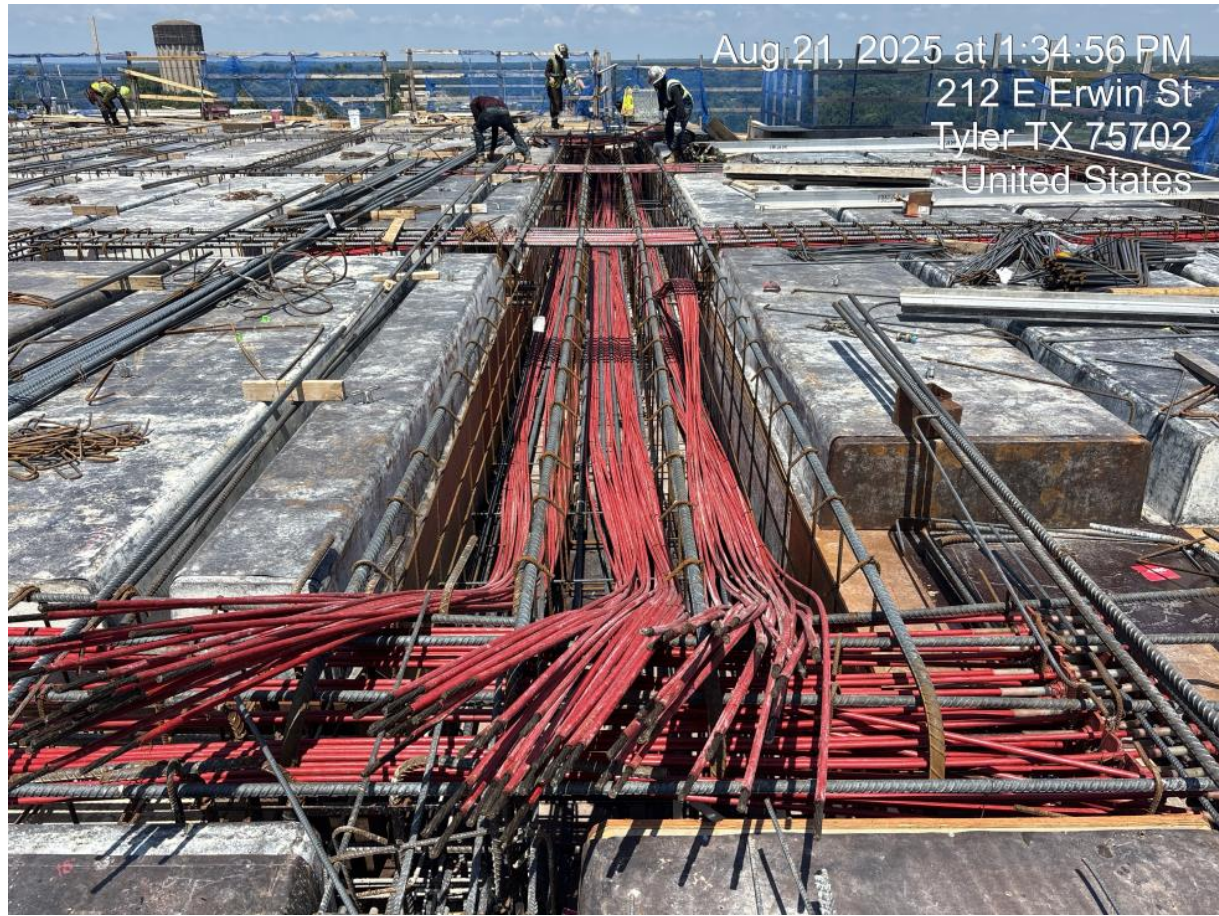
Weather Impacts

| Smith County Courthouse - Phase 2 & 3 | | | | | |
|---------------------------------------|-----|----------------------------------|---|---------------------------|------|
| Project Weather Log | | | | Date of Print = 8/25/2025 | |
| Weather Days to Date = | | | | 109 | Days |
| Claimable Weather Days to Date = | | | | 70 | Days |
| Rain Affecting Activities | | Temperature Affecting Activities | | Wind Affecting Activities | |
| Total Rain Days = | 103 | Total Temperature Days = | 5 | Total Wind Days = | 1 |
| Claimable Days = | 64 | Claimable Days = | 5 | Claimable Days = | 1 |



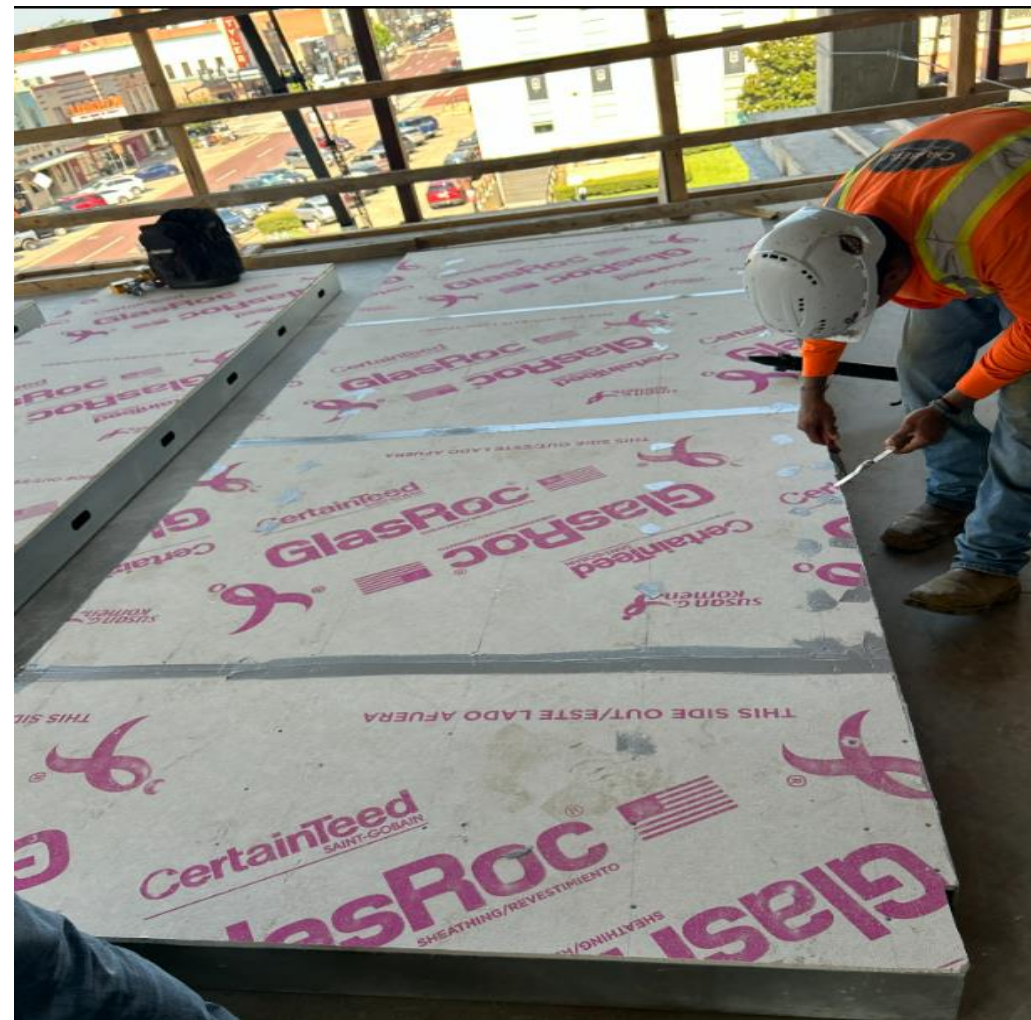
- Quarterly reconciliation of 66 claimed weather delay days through June 2025
 - 66 inches of rain from project start to end of June 2025
 - Average yearly rainfall = 46 inches
- Team working everyday to mitigate against schedule delays from adverse weather conditions
- Targeted completion of Phase 2 = Fall 2026
- Targeted completion of Phase 3 = Spring 2027

Construction Update (structure)



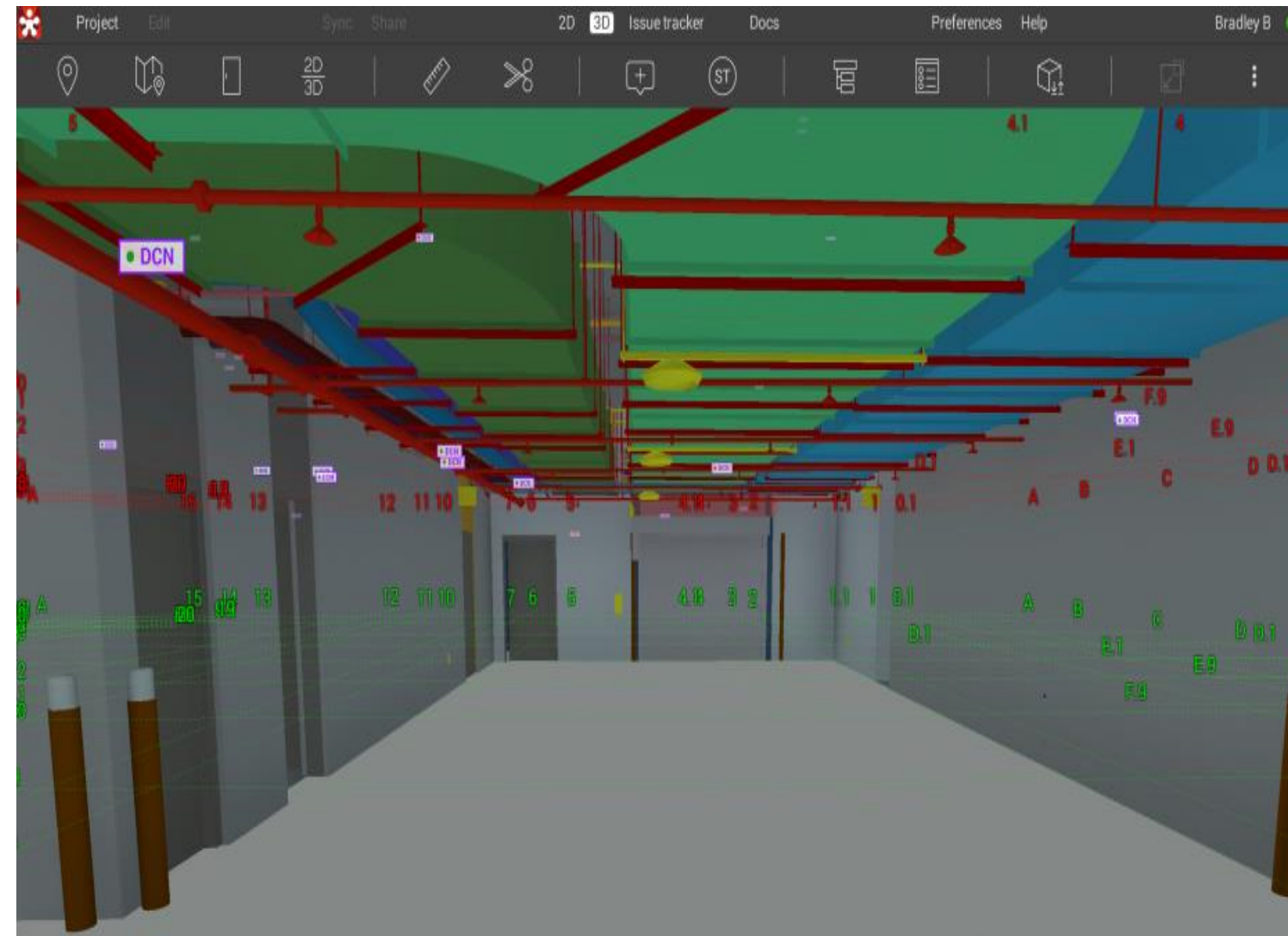
- Mission = get concrete demobilized and structural steel started ASAP
- Flow of work for steel = south, west, north, east
- Targeting 12 weeks for structural steel install
- Using prefabrication on dome to reduce safety risks and help with weather impacts
- What's next?
 - Concrete crews out – steel crews in

Construction Update (exterior)



- Mission = get “in the dry” ASAP
- Flow of work for framing & sheathing by floor and elevation = south, east, north, west
- Targeting five weeks per floor from start of framing to windows installed
- Using “panel method” on exterior walls to save time, work safer, and reduce weather impacts
- What’s next?
 - Final façade install – masonry, GFRC, roofing, etc.

Construction Update (interior)



- Mission = get OH/in-wall rough-in done ASAP so drywall can go
- Flow of work is by floor and area
- Using BIM process to ensure MEPS systems are right the first time
- What's next?
 - OH punch list
 - Hang drywall
 - Continue the work up the building

Questions



HoarConstruction

Always In Process

Thank you!